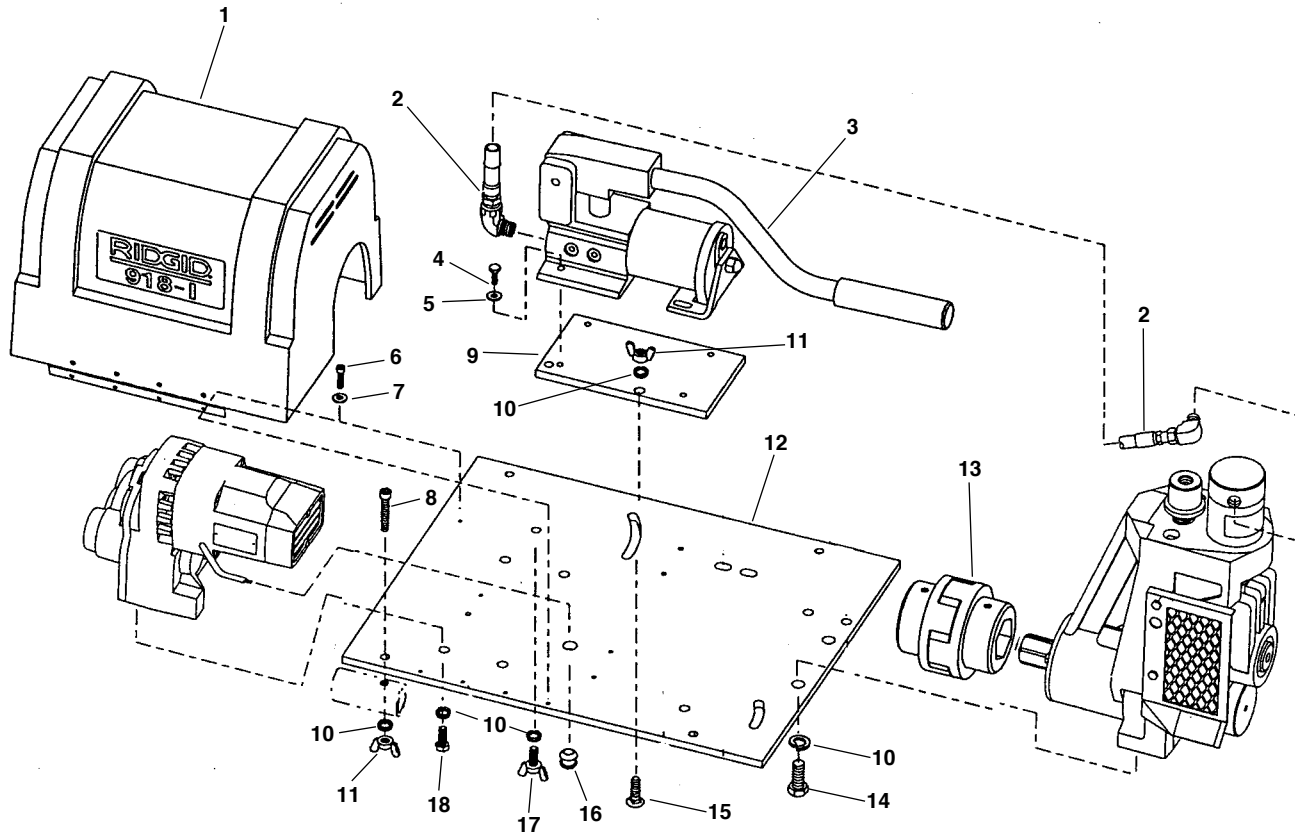
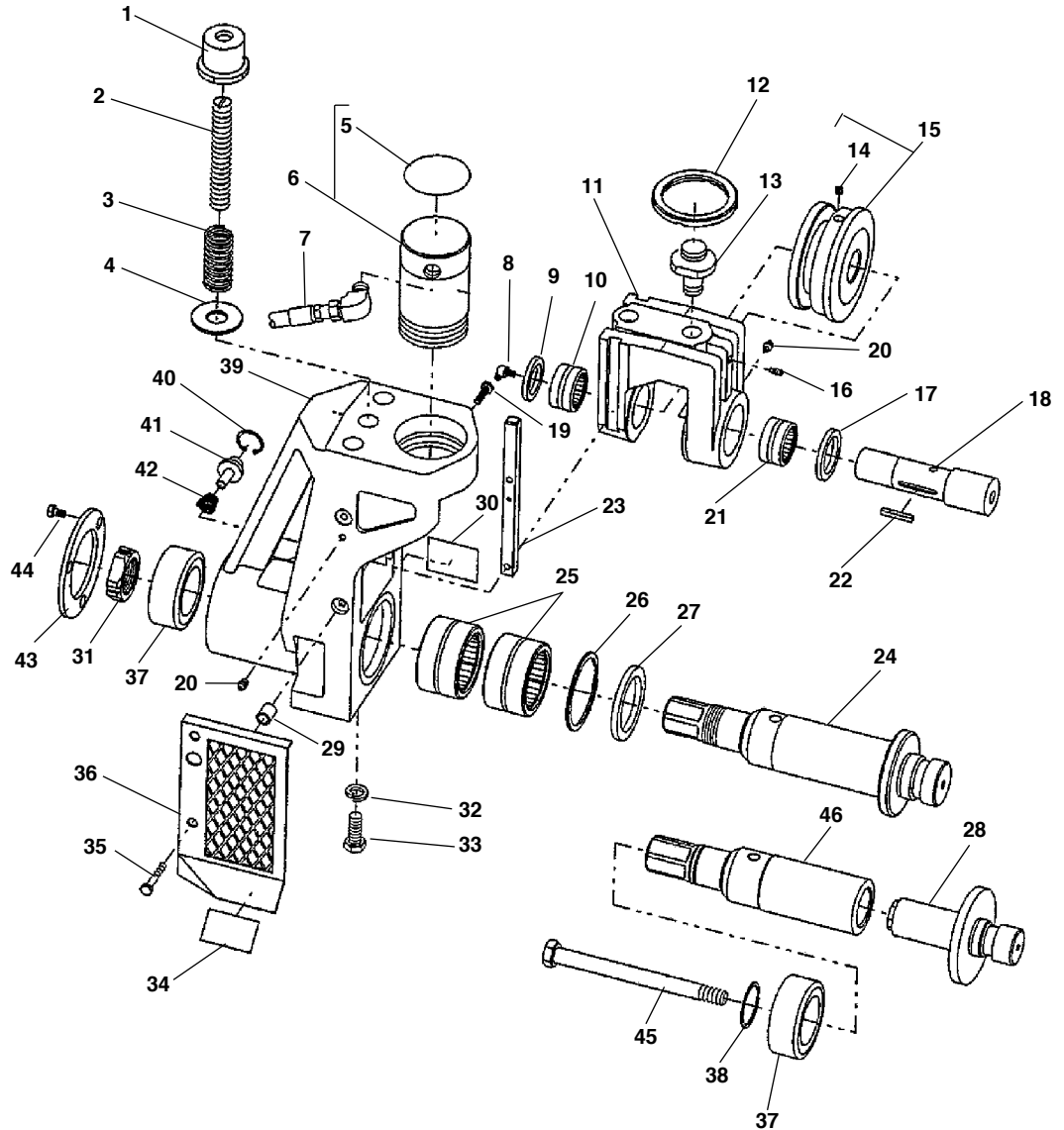


**Base Assembly**



**NOTE: Order parts by Catalog Number only.  
DO NOT order by Reference Number.**

Ref. No.	Catalog No.	Description
1	65557	Motor Shroud
2	49142	Hydraulic Hose Assembly – 115V, 230V
	61372	Hydraulic Hose Assembly – 100V
3	61132	Hydraulic Pump Complete
4	60005	Hex Screw, 1/4" - 20 x 3/4" (4)
5	44740	Lock Washer 1/4" (4)
6	40260	Screws #10 - 24 x 1/2" S.H.C.S. (5)
7	45365	Flat Washer, #10 (5)
8	58052	Hex Screw, 3/8" - 16 x 2 1/2" (4)
9	87527	Pump Mount Plate, 115V, 230V
	65552	Pump Mount Plate, 100V
10	40930	Lock Washer 3/8"
11	45385	Wing Nut, 3/8" - 16" (5)
12	65577	Base Plate
13	65567	Drive Coupling
14	45500	Hex Screw, 1/2" - 13 x 1 1/4" (2)
15	61367	Plow Bolt
16	65112	Rubber Grommet
17	61362	Wing Screw, 3/8" - 16 x 3/4"
18	45470	Hex Screw 3/8" - 16 x 1"

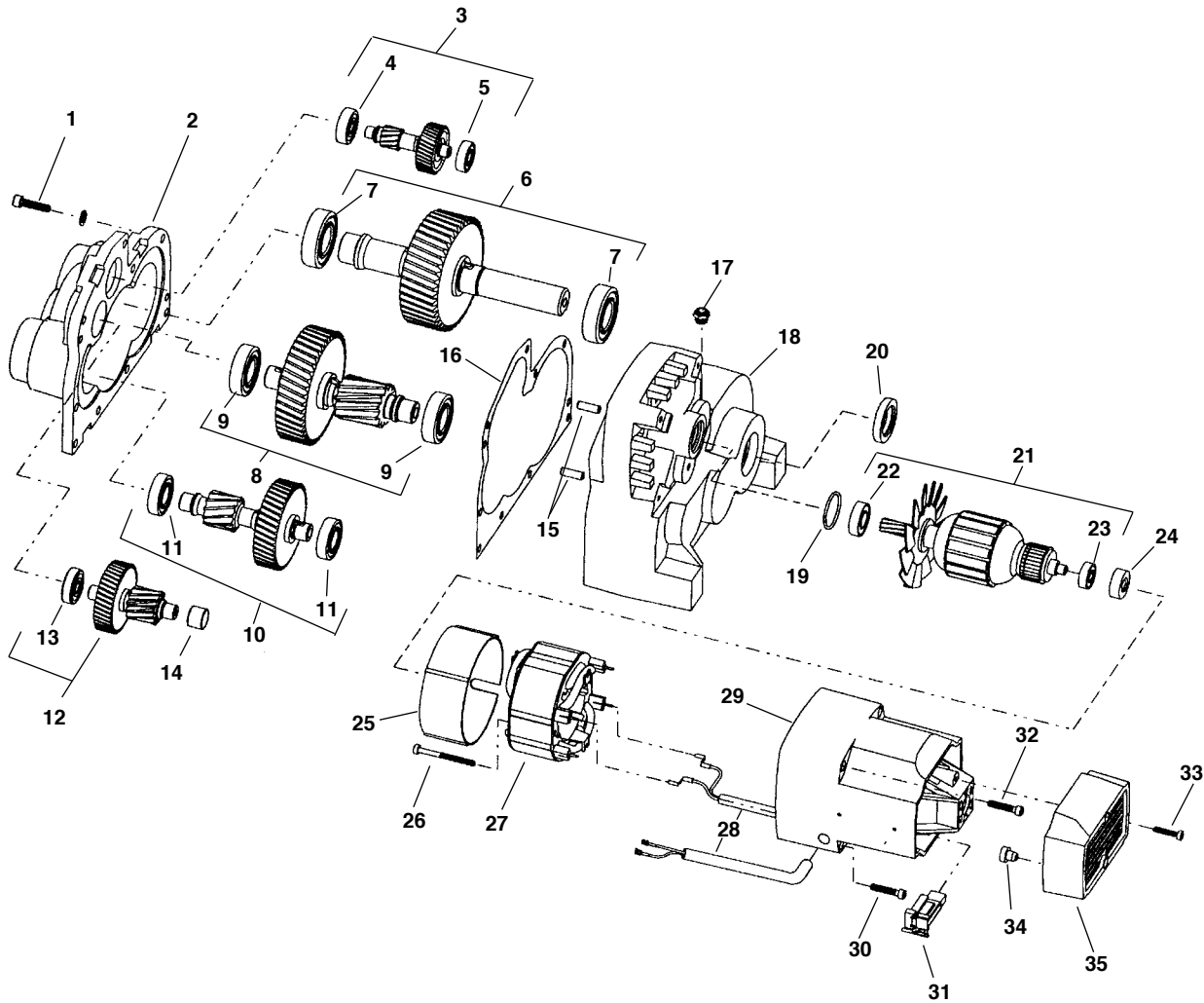


**NOTE: Order parts by Catalog Number only.  
DO NOT order by Reference Number.**

Ref. No.	Catalog No.	Description	Ref. No.	Catalog No.	Description	Ref. No.	Catalog No.	Description
1	49117	Depth Adjustment Nut	18	49102	Upper Roll Shaft (Incls. Ref. 8, 22)	34	49257	Label, Warning
2	49112	Depth Rod	19	49252	Hex Screw, 1/4" - 20 x 1" (2)	35	49212	Hex Screw, 1/4" - 20 x 1 3/16" (2)
3	49122	Spring	20	46860	Grease Fitting (4)	36	49197	Guard (Incls. Ref. 29)
4	60995	Flat Washer, 3/4"	21	87610	Roller Bearing	37	49127	Bearing
5	49262	Label, Depth Adjustment	22	27002	Key, 3/16" Sq. x 1 3/16"	38	49192	Spiral Retaining Ring
6	49147	Hydraulic Cylinder	23	49107	Set of 2 Slide Keys	39	49057	Lower Roll Housing (Incls. Ref. 20)
7	49142	Hydraulic Hose Assembly - 115V/230V	24	51427	Drive Shaft, 2" - 6" Sch 10 & 40	40	49177	Retaining Ring
8	46915	Grease Fitting - 65 Deg.	25	51432	Drive Shaft Assy. - same as above and includes Ref. 31, 37	41	49172	Lock Pin
9	87695	Seal	26	51817	Drive Shaft, 8" - 12" Sch. 10, 8" Sch 40	42	44915	Spring
10	87710	Roller Bearing	27	51812	Drive Shaft Assy. - same as above and includes Ref. 31, 37	43	49132	Retaining Plate
11	49062	Upper Roll Housing (Incls. Ref. 9, 10, 16, 17, 20, 21)	28	49157	Drive Roll, 1"	44	60265	Hex Screw, 1/4" - 20 x 1/2" (3)
12	49152	Lock Ring	29	49072	Drive Roll, 1 1/4" - 1 1/2"	45	49667	Hex Bolt 5/8" - 11 x 7"
13	49082	Piston Rod Coupling	30	51732	Drive Roll, Copper 2" - 6"	46	49067	Drive Shaft - for 1", 1 1/4", 1 1/2" Rolls and Copper Roll 2" - 6"
14	45192	Cone Pt. Screw, 1/4" - 20 x 3/8"	31	49202	Set of 2 Spacers	49627	Drive Shaft Assy. - same as above and includes Ref. 37, 38, 45	
15	49162	Groove Roll, 1"	32	49207	Label, Warning			
	49097	Groove Roll, 1 1/4" - 1 1/2"	33	49607	Bearing Retaining Nut			
	49217	Groove Roll 2" - 6" SC 10/40		84150	Lock Washer, 1/2" (2)			
	51822	Groove Roll, 8" - 12" Sch. 10, 8" Sch 40		45500	Hex Screw, 1/2" x 1 1/4" (2)			
	50127	Groove Roll, Copper 2" - 6"						
16	45265	Set Screw, 1/4" - 20 x 1/2"						
17	87690	Seal						

**Following Items Not Shown:**  
 49087 T-Handle Hex Key, 1/8"  
 53987 Roll Storage Case  
 54317 Box Wrench  
 67192 Spanner Wrench  
 67197 Hex Key 3/8"

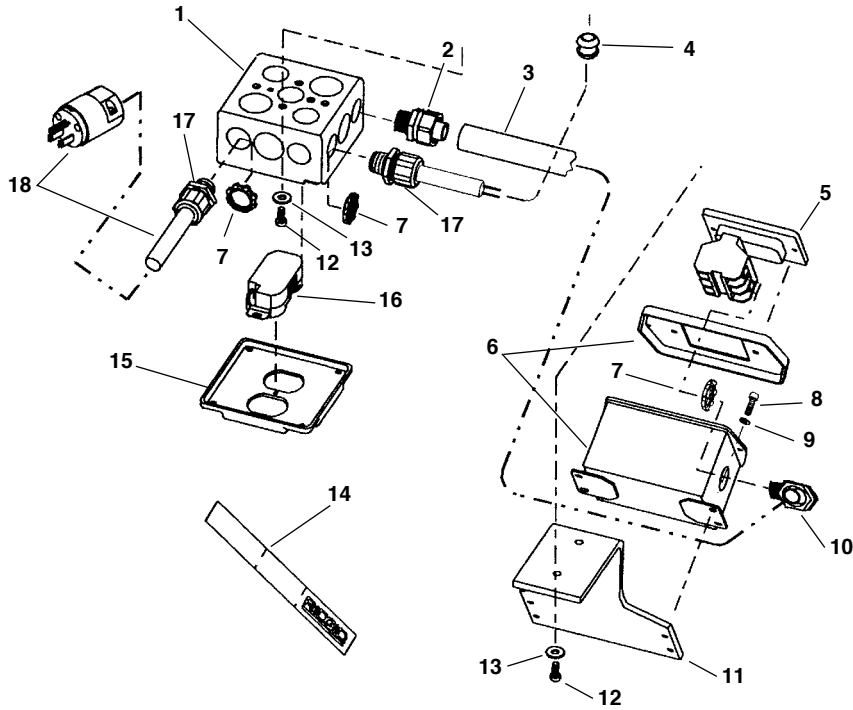
**Motor/Transmission**



**NOTE: Order parts by Catalog Number only.  
DO NOT order by Reference Number.**

Ref. No.	Catalog No.	Description	Ref. No.	Catalog No.	Description	Ref. No.	Catalog No.	Description
1	83685	Screws	15	65497	Dowel Pin (2)	27	58572	Field Assembly – 100V
2	65452	Transmission Housing Cover	16	65502	Gasket		45897	Field Assembly – 115V
3	65457	1st Intermediate Gear Assembly	17	59252	Breather Plug		58567	Field Assembly – 230V
4	44760	Ball Bearing	18	65507	Transmission Housing	28	58562	Wiring Harness
5	59147	Ball Bearing	19	60227	O-Ring Seal	29	65517	Motor Housing
6	65462	Output Shaft Assembly	20	65512	Grease Seal	30	26642	Soc. Hd. Cap Scr. #10-32 x 1 3/4" (4)
7	45315	Ball Bearing (2)	21	58557	Armature Assembly – 100V	31	45882	Brush/Holder Set – 100V, 115V
8	65467	4th Intermediate Gear Assembly		45907	Armature Assembly – 115V		61287	Brush/Holder Set – 230V
9	44565	Ball Bearing (2)		58552	Armature Assembly – 230V	32	58547	Screws
10	65472	3rd Intermediate Gear Assembly	22	43017	Ball Bearing	33	45867	Screws
11	65477	Ball Bearing (2)	23	45912	Ball Bearing	34	45877	Bumper
12	65482	2nd Intermediate Gear Assembly	24	42777	Bearing Mount	35	45872	End Cap
13	65487	Ball Bearing	25	58577	Fan Shroud			
14	65492	Needle Bearing	26	45902	Screws			

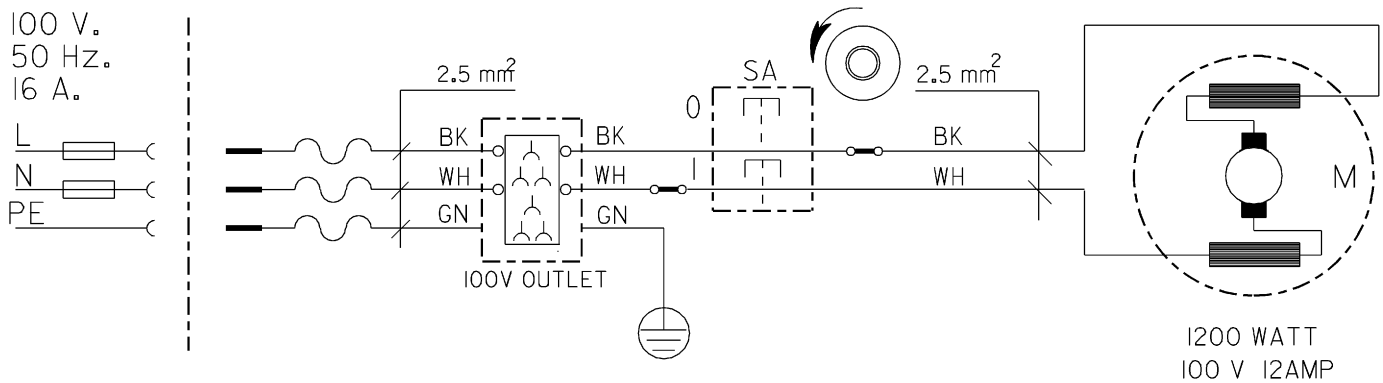
**Electrical, 100V**



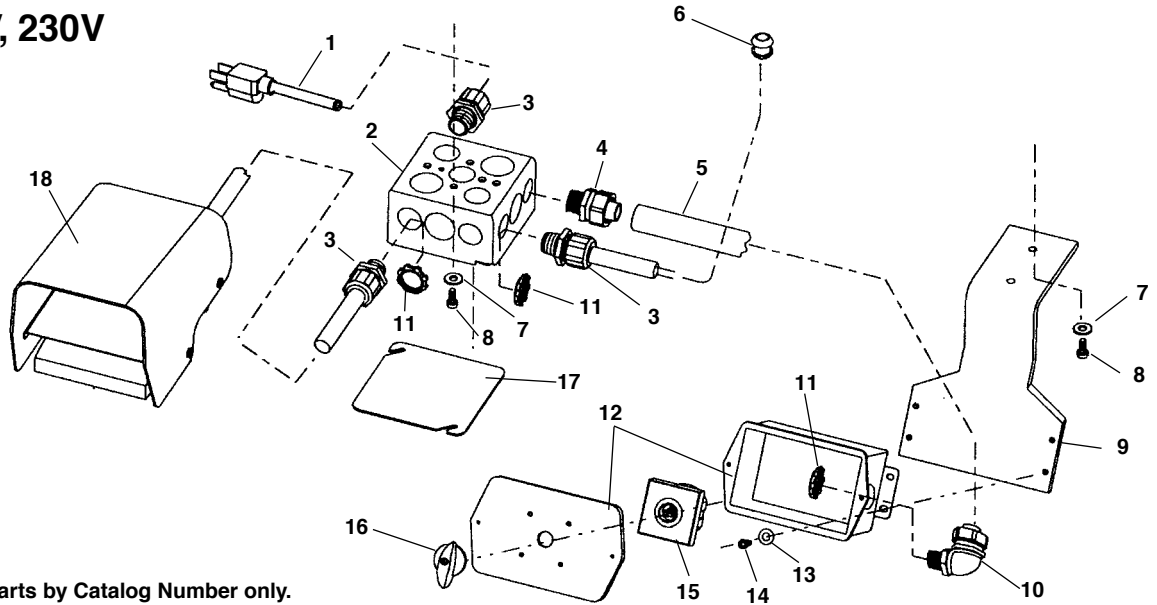
**NOTE: Order parts by Catalog Number only.  
DO NOT order by Reference Number.**

Ref. No.	Catalog No.	Description
1	65587	Junction Box
2	65607	Conduit Fitting, 1/2" Straight
3	65612	Flexible Conduit, 1/2"
4	65112	Rubber Grommet
5	54227	Switch, Push Button
6	65637	Switch Box w/Cover
7	65642	Locknut, 1/2" NPT (4)
8	45750	Screw #10 - 24 x 3/8" S.H.C.S (4)
9	45365	Flat Washer, #10 (2)
10	65647	Fitting, 90 Deg, 1/2"
11	61337	Switch Bracket
12	60005	Hex Screw, 1/4" - 20 x 3/4" (2)
13	44740	Lock Washer 1/4" (2)
14	65582	Lanyard
15	95597	Junction Box Cover
16	65592	Outlet
17	65602	Strain Relief (2)
18	46740	Power Cord w/Plug

**Wiring Diagram**



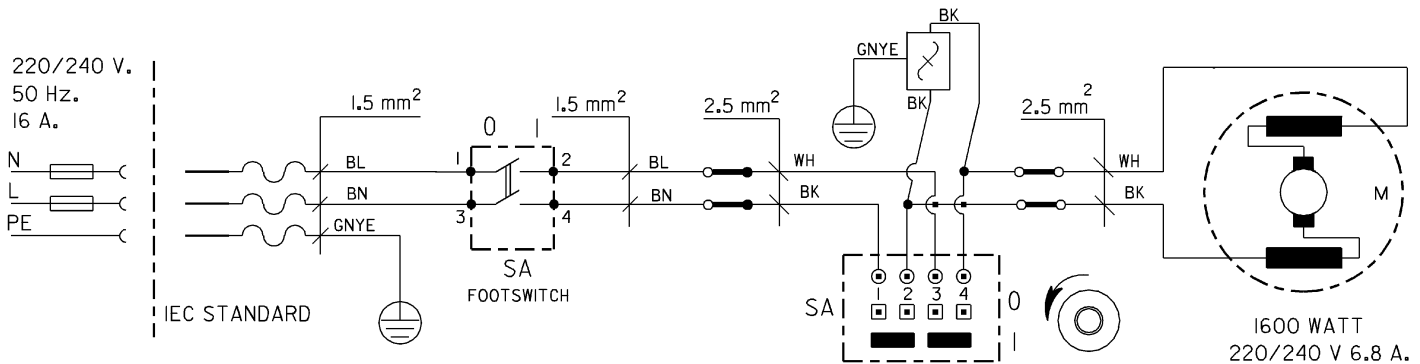
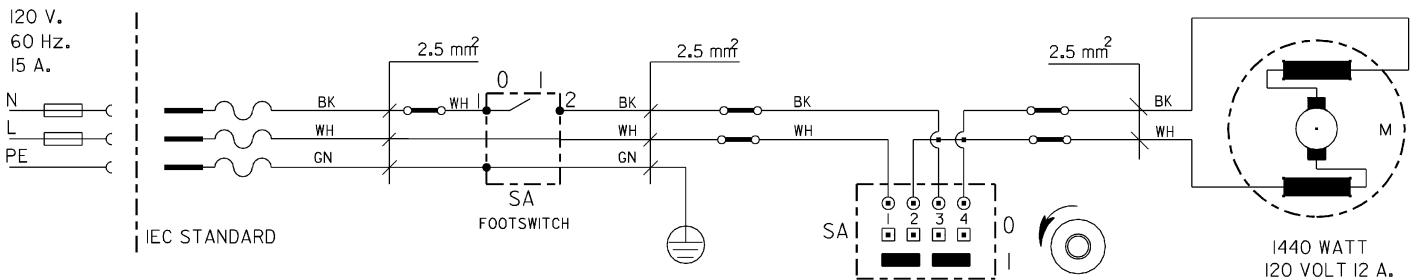
**Electrical, 115V, 230V**



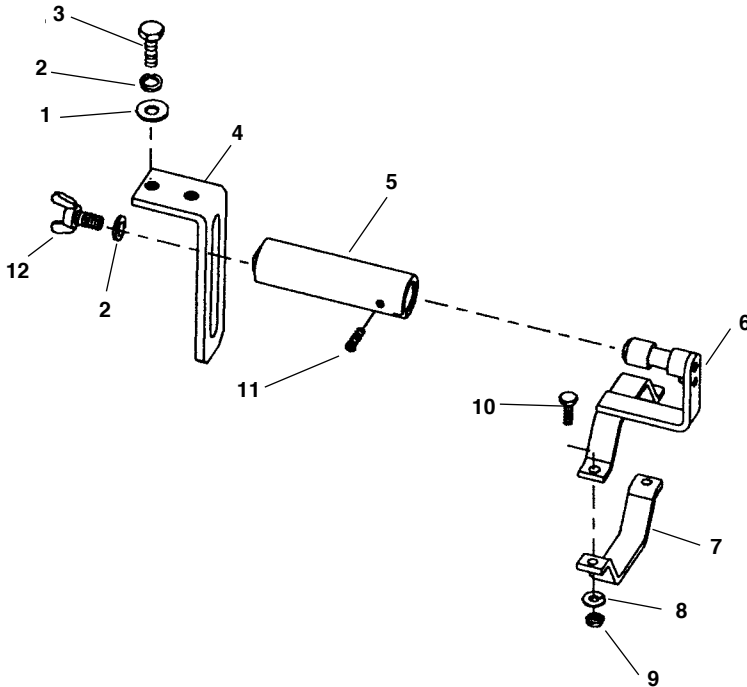
**NOTE: Order parts by Catalog Number only.  
DO NOT order by Reference Number.**

Ref. No.	Catalog No.	Description	Ref. No.	Catalog No.	Description
1	46740	Power Cord w/Plug	11	65642	Locknut, 1/2" NPT (5)
2	65587	Junction Box	12	65962	Switch Box w/Cover
3	65602	Strain Relief (3)	13	45365	Flat Washer, #10 (4)
4	65607	Conduit Fitting, 1/2" Straight	14	45750	Screw #10 - 24 x 3/8" S.H.C.S. (4)
5	65612	Flexible Conduit, 1/2"	15	65967	Switch w/Knob
6	65112	Rubber Grommet	16	65972	Knob w/Screw
7	44740	Lock Washer 1/4" (4)	17	65977	Junction Box Cover
8	60005	Hex Screw, 1/4" - 20 x 3/4" (4)	18	36642	Foot Switch, B-294, 115V Model
9	61337	Switch Bracket		40017	Foot Switch, B-298, 230V Model
10	65647	Fitting, 90 Deg, 1/2"			

**Wiring Diagram**



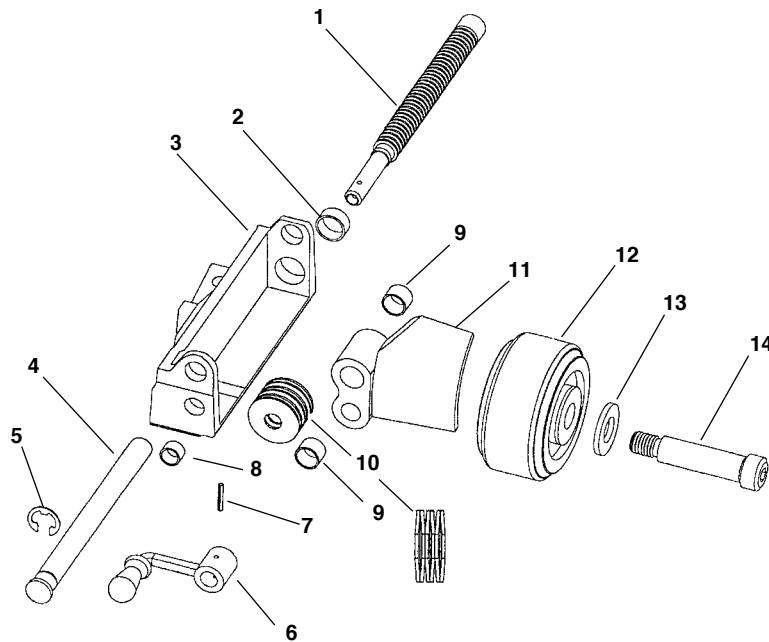
**Sander Bracket**



**NOTE: Order parts by Catalog Number only.  
DO NOT order by Reference Number.**

Ref. No.	Catalog No.	Description
1	61592	Flat Washer $\frac{3}{8}$ "
2	40930	Lock Washer, $\frac{3}{8}$ " (3)
3	45590	Hex Screw $\frac{3}{8}$ " - 16 x $1\frac{1}{2}$ "
4	65112	Sander Bracket
5	65627	Sander Pivot Tube
6	65057	Sander Attachment
7	65632	Sander Clamp
8	44740	Lock Washer, $\frac{1}{4}$ "
9	80370	Hex Nut, $\frac{1}{4}$ "
10	49252	Hex Screw, $\frac{1}{4}$ " - 20 x 1" (2)
11	54322	Set Screw, Half Dog Point, $\frac{1}{4}$ " - 20 x $\frac{3}{8}$ "
12	61362	Wing Screw, $\frac{3}{8}$ " - 16 x $\frac{3}{4}$ "

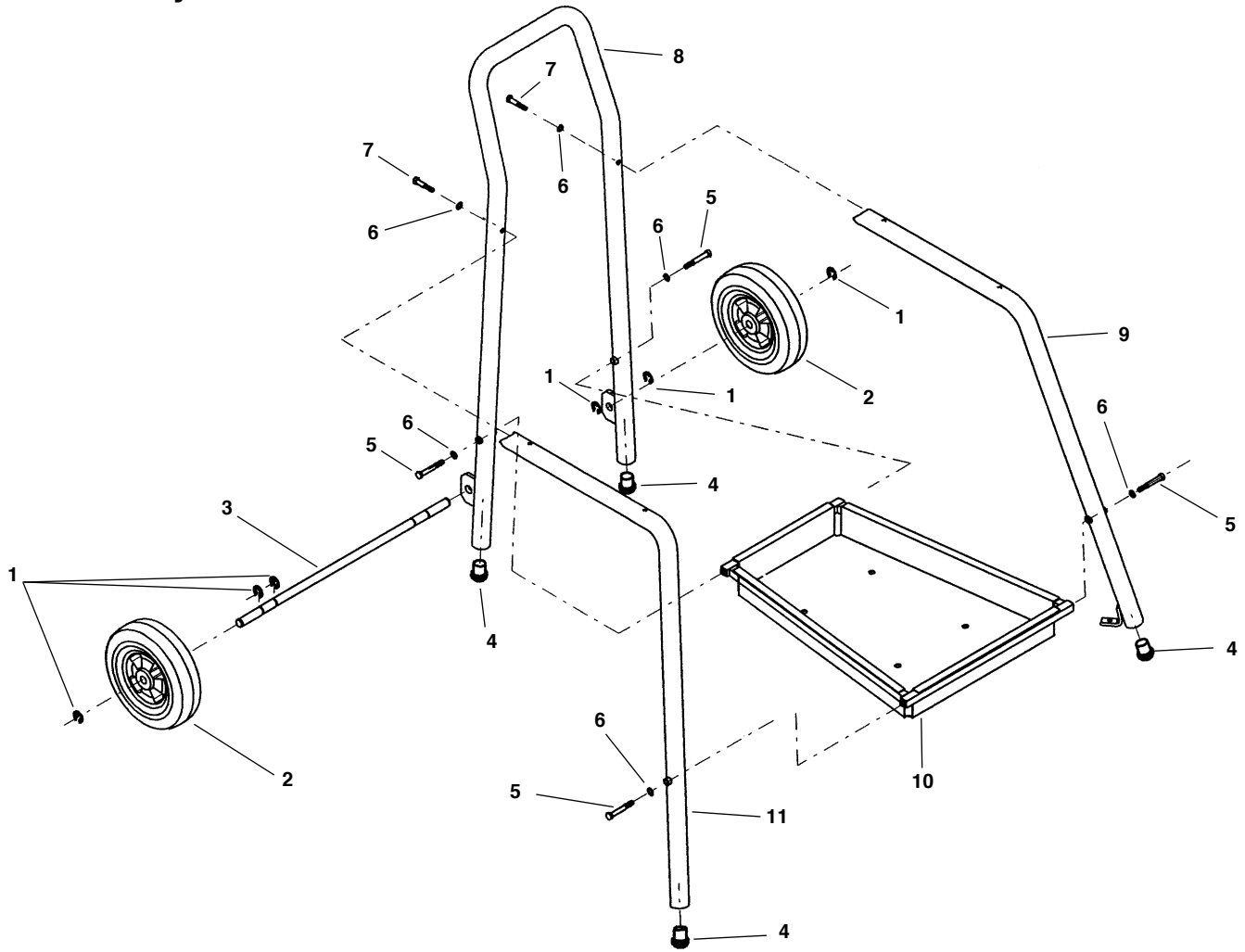
**Stabilizer**



**NOTE: Order parts by Catalog Number only.  
DO NOT order by Reference Number.**

Ref. No.	Catalog No.	Description
—	59992	Stabilizer Kit, Non-Operator Side
—	59997	Stabilizer Kit, Operator Side
1	61802	Feed Screw
2	61817	Bearing, $\frac{3}{4}$ " x $\frac{3}{8}$ "
3	61797	Slide Box, Operator Side
4	61792	Slide Box, Non-Operator Side
5	91832	Guide Shaft
6	42580	E-Ring
7	53087	Crank Handle
8	55222	Pin
9	53072	Bearing, $\frac{1}{2}$ " x $\frac{3}{8}$ "
10	61822	Set of 2 Bearing, $\frac{5}{8}$ " x $\frac{1}{2}$ "
11	61827	Set of 6 Bellville Washers
12	61812	Slide, Operator Side
13	61807	Slide, Non-Operator Side
14	53052	Wheel
15	60995	Washer
16	53097	Shoulder Bolt

**Cart Assembly**



**NOTE: Order parts by Catalog Number only.  
DO NOT order by Reference Number.**

Ref. No.	Catalog No.	Description
	64192	Stand Complete
1	58850	Retaining Ring (6)
2	23602	Wheel, 10" Dia. (2)
3	65522	Wheel Axle
4	61470	Rubber Foot (4)
5	46675	Hex Screw $\frac{3}{8}$ " - 16 x $2\frac{3}{4}$ " (4)
6	40930	Lock Washer $\frac{3}{8}$ " (6)
7	61357	Hex Screw, $\frac{3}{8}$ " - 16 x $2\frac{1}{2}$ " (2)
8	65527	Rear Leg Support/Handle - U.S.
	61342	Rear Leg Support/Handle - Export
9	65537	Leg, Right Front - U.S.
	61347	Leg, Right Front - Export
10	65542	Tool Tray Assembly
11	65547	Leg, Left Front - U.S.
	61352	Leg, Left Front - Export