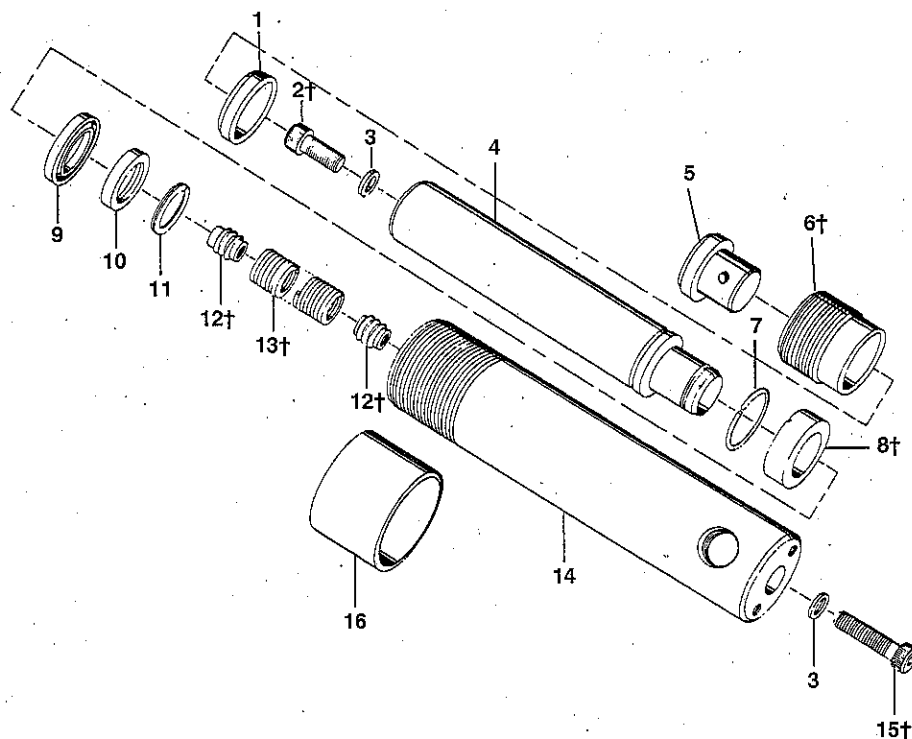


Single Acting/Spring Return/10 Ton Series

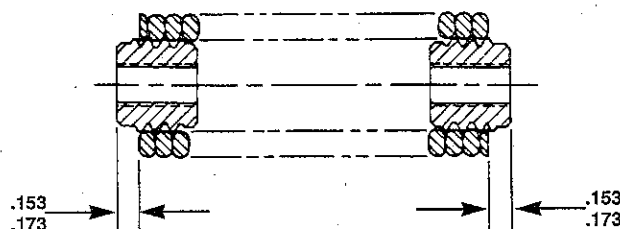
Ref. No.	Catalog No.	Description
—	50892	10 Ton Hyd. Cylinder
1*	50897	Rod Wiper
†2	50902	Screw 1/4"-20 x 3/8"
3*	50907	Copper Washer (2)
4	50912	Piston Rod
5	50917	Thread Adapter
†6	50922	Retainer Nut
7	50927	Retaining Ring
†8	50932	Piston Head
9*	50942	U-Cup Piston Seal
10	50947	Slip Retainer
11*	50952	Retaining Ring
†12	50957	Spring Retainer
†13	50962	Extension Spring
14	50967	Cylinder Body
†15	50972	Screw 1/4"-20 x 3 1/2"
16	50977	Thread Protector
—	50982	Repair Kit
—	50987	Ram Half Coupler
—	50992	Warning Decal

Items marked with an asterisk (*) are in repair kit.

†See Service Notes

SERVICE NOTES

Ref. No.	Dimensions	Torque Specifications	Notes
2	1/4"-20 x 3/8"	100 in. Lbs.	
6		45 in. Lbs.	Appearance may vary from illustration.
8			Assemble with groove towards shoulder.
12, 13			Spring must not extend beyond ends of spring retainer. Stretch, clean and lubricate before assembly. See diagram below.
15	1/4"-20 x 3 1/2"	100 in. Lbs.	



Refer to the Operator's Manual that accompanies this product for detailed information regarding safety, set-up, operation, maintenance, accessories and troubleshooting.

Address additional inquiries to THE RIDGE TOOL COMPANY, ATTN: TECHNICAL SERVICE DEPARTMENT, 400 CLARK STREET, ELYRIA, OH 44036-2023