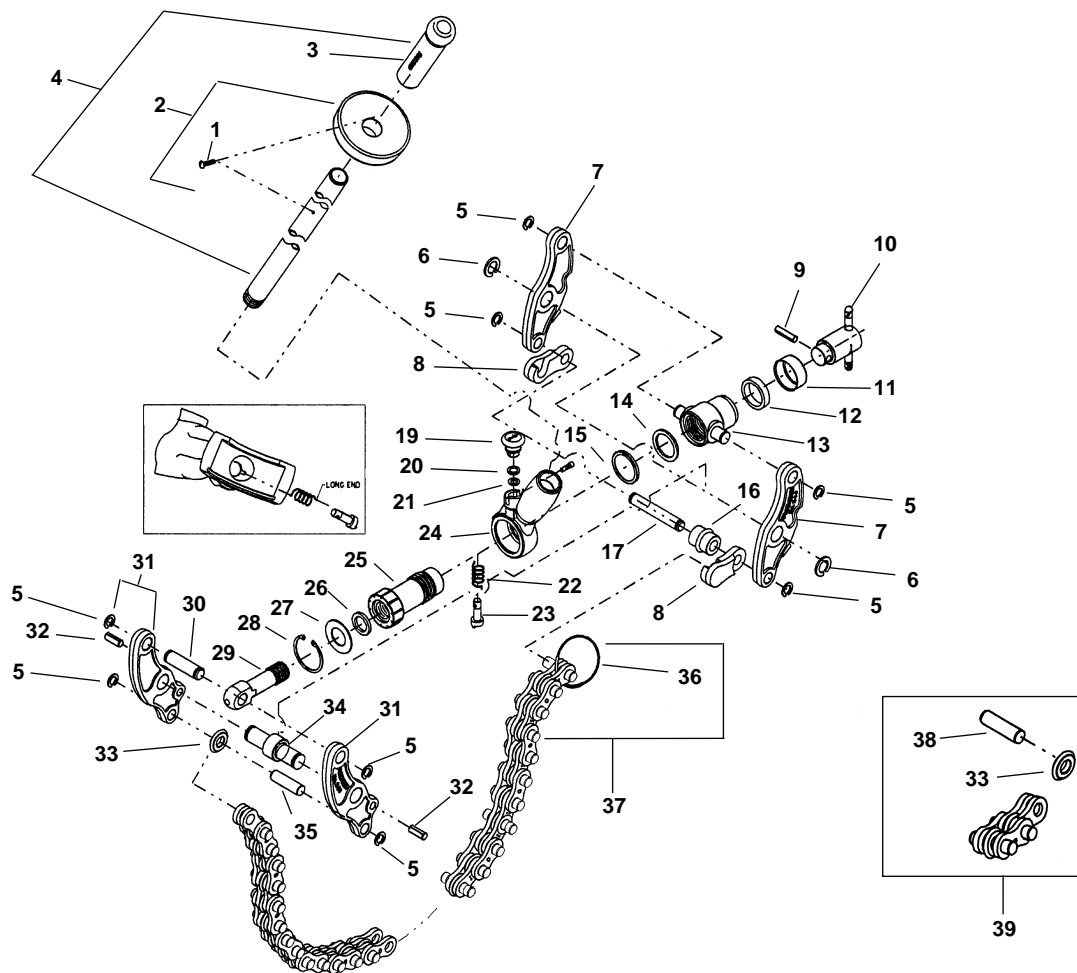


Soil Pipe Capacity: 2" – 6"

Water Main Capacity: Class 22, 4"



**NOTE: Order parts by Catalog Number only.  
DO NOT order by Reference Number.**

Ref. No.	Catalog No.	Description	Ref. No.	Catalog No.	Description	Ref. No.	Catalog No.	Description
-	32900	246 Soil Pipe Cutter	14	34500	Seal	27	34520	Ratchet Housing Washer
1	46470	Screw	15	34490	Cup	28	33700	Retaining Ring
2	33795	Handle Stop Assembly	16	34440	Spacer Wheel	29	34480	Eyebolt
3	51630	Handgrip	17	34460	Spacer Pin	30	34455	Eyebolt Pin
4	34545	Handle Assembly	18	34450	Pawl Pin	31	33560	Slide Bar (Inside) (2)
5	34550	Retaining Ring (8)	19	38700	Ratchet Knob	32	51502	Spiral Pin (2)
6	34555	Retaining Ring (2)	20	34495	Seal	34	34445	Center Pin
7	33550	Side Bar (Outside) (2)	21	34485	Cup	35	34465	Chain Pin
8	33790	Hook Assembly	22	34525	Ratchet Pawl Spring	36	33675	Ring
9	34565	Spring Pin	23	34475	Ratchet Pawl	37	34575	Chain Assembly
10	33555	Knob and Handle Assembly	24	99530	Ratchet Housing Assembly	38	34470	Cutter, Wheel Pin
11	34515	Cup	25	99520	Ratchet Shaft	33	33225	Cutter Wheel
12	34510	Seal	26	34505	Eyebolt Seal	39	34570	Chain Extension Assembly
13	99525	Trunnion						

\* **34570 CHAIN EXTENSION ASSEMBLY**—Includes 33225 Cutter Wheels (2), 34535 Inside Links (2), 34540 Outside Links (2) and 34470 Cutter Pins (2) per section. **34570 CHAIN EXTENSION ASSEMBLY** is completely assembled, except for one cutter wheel and one pin, packed loose. These are needed to make the connection on the existing chain. Each section is approximately 3 inches long. Remove the 33675 Ring at the end of the existing chain...connect the loose wheel and pin to the inner link on the chain. Attach the 33675 Ring to the end of the chain extension.

**WARNING: Do not cut soil pipe larger diameter than: Clay – 12" diameter; Cast Iron – 8" diameter**