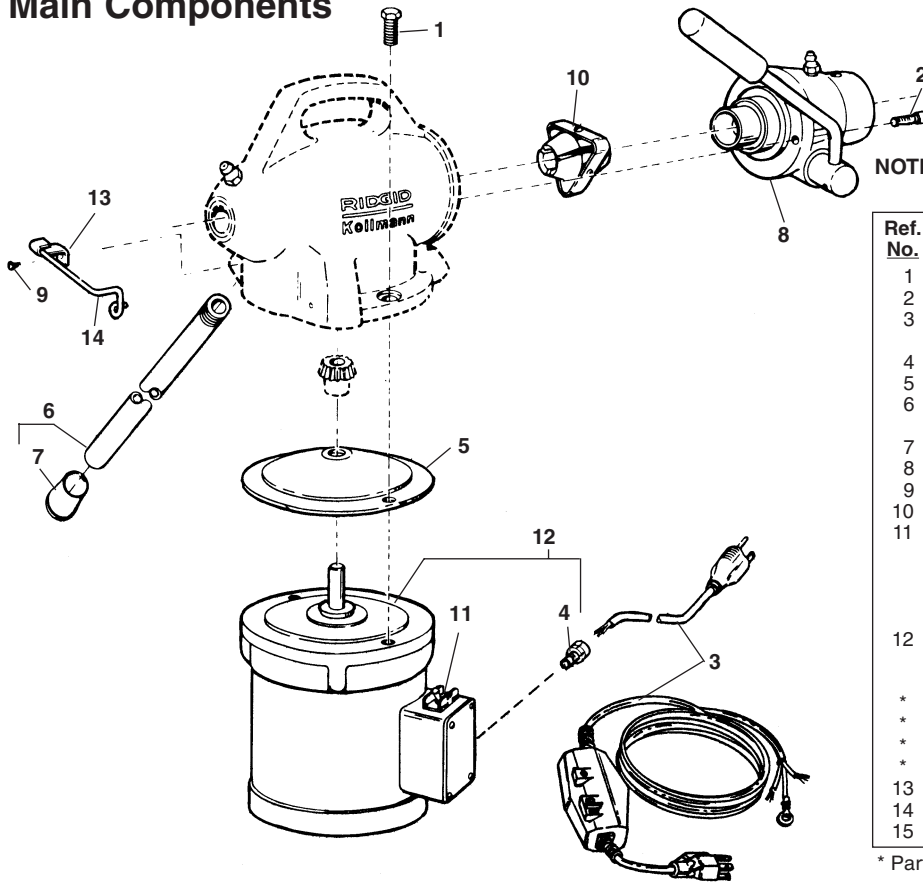


Main Components

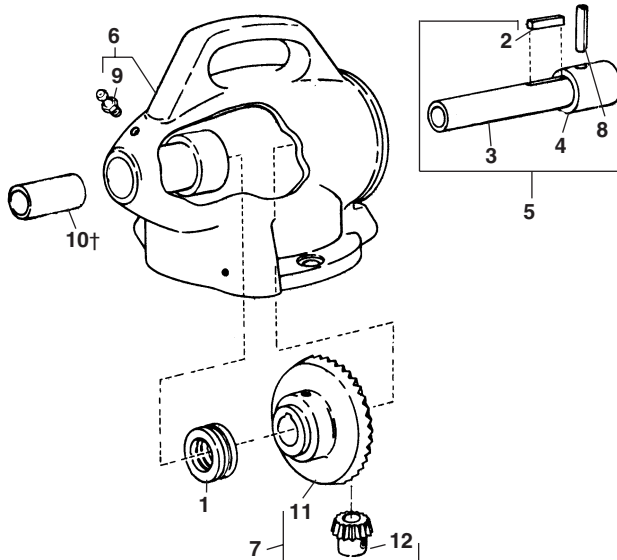


NOTE: Order parts by Catalog Number only. DO NOT order by Reference Number.

| Ref. No. | Catalog No. | Description |
|----------|-------------|--|
| 1 | 59785 | Screw (2) |
| 2 | 60910 | Screw (2) |
| 3 | 50507 | Cord with GFCI |
| | 27656 | Cord (Europe) |
| 4 | 41147 | Strain Relief |
| 5 | 61935 | Insulating Motor Gasket |
| 6 | 59825 | Legs w/Rubber Feet (3 per set) (Incl. Ref. No. 7) |
| 7 | 59965 | A-2240 Rubber Feet (3) |
| 8 | 59975 | A-2244-X Rack and Pinion Assembly |
| 9 | 59990 | A-2256 Screw (2) |
| 10 | 59450 | A-3179 Clutch Jaw Assembly |
| 11 | 95845 | Switch DPDT - 6 Terminal (Emerson Motor) |
| | 41817 | Switch 3PDT - 9 Terminal (Emerson Motor) |
| | 24236 | Switch (Europe) |
| 12 | 69265 | Motor Assembly - 115V (Incl. Ref. Nos. 4 and 11) |
| | 16716 | Motor Assembly (230V Europe) |
| * | 31336 | Motor Shaft Seal (Europe) |
| * | 31346 | Switch Cover (Europe) |
| * | 24246 | Switch Box (Europe) |
| * | 29976 | Run Capacitor (Europe) |
| 13 | 89800 | Catch |
| 14 | 89805 | Pin |
| 15 | 84507 | K-50 Contact Switch (Parts Not Shown) |

* Parts Not Shown - Europe Only

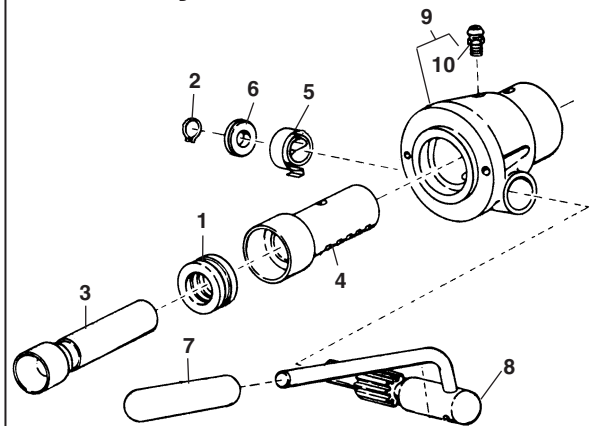
Bevel Gear and Related Parts



| Ref. No. | Catalog No. | Description | Ref. No. | Catalog No. | Description |
|----------|-------------|-----------------|----------|-------------|------------------------------------|
| 1 | 59945 | Bearing | 7 | 60985 | Bevel and Pinion Gear w/Set Screws |
| 2 | 60680 | Key | 8 | 76830 | Spring Pin |
| 3 | 61570 | Shaft | 9 | 89810 | Grease Fitting |
| 4 | 61575 | Cone | 10† | 61715 | Bronze Bushing |
| 5 | 59695 | Shaft with Cone | 11 | 24577 | Bevel Gear w/Key |
| 6 | 59960 | Body | 12 | 24572 | Pinion Gear w/Key |

† Service Note: After replacing Bronze Bushing a 1/4" drill bit must be used for drilling a grease hole port for grease fitting.

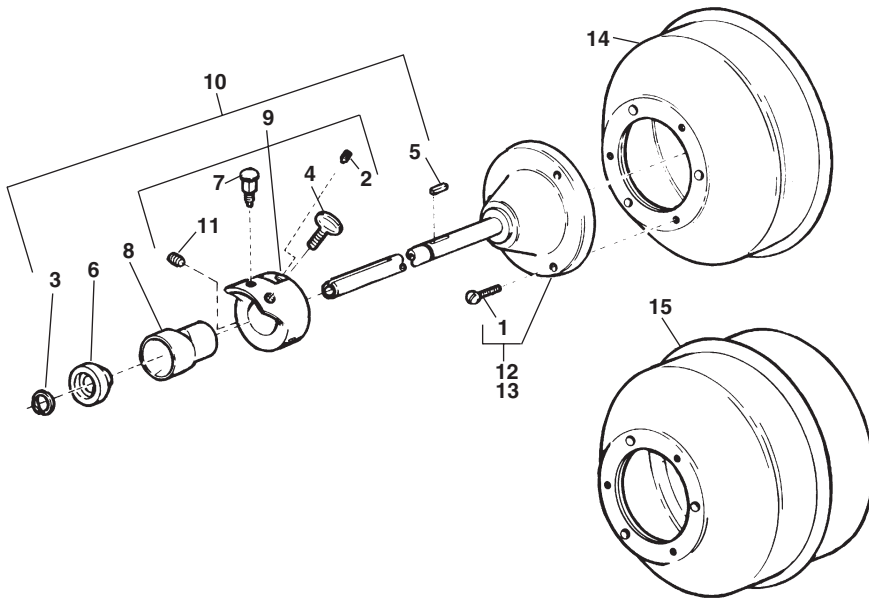
Rack and Pinion Assembly No. A-2244



| Ref. No. | Catalog No. | Description |
|----------|-------------|--|
| — | 59975 | Rack & Pinion Assembly |
| 1 | 59945 | Bearing |
| 2 | 60860 | Retaining Ring |
| 3 | 61580 | Rear Clutch Cone Sleeve |
| 4 | 61585 | Gear Rack |
| 5 | 61595 | Pinion Spring |
| 6 | 61600 | Pinion Stem Washer |
| 7 | 61605 | Handle Grip |
| 8 | 59980 | Handle with Pinion Assembly |
| 9 | 60965 | Rack and Pinion Housing (Incl. Ref. No. 10) |
| 10 | 89810 | Grease Fitting |

Cable Adapters

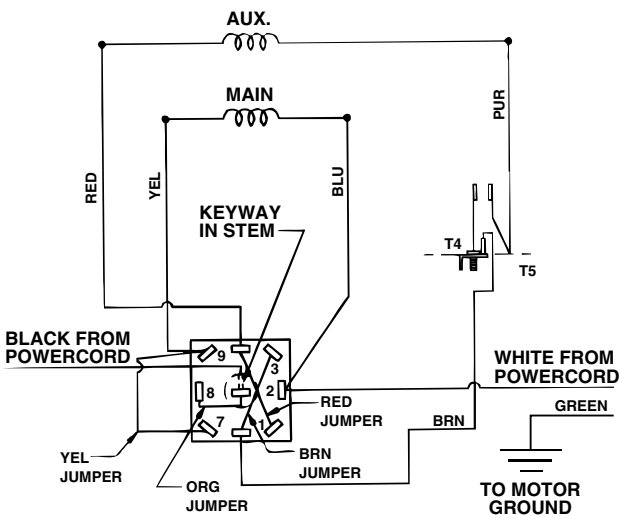
| Cable No. | Description |
|-----------|--|
| 59250 | A-17-A Cable Adapter (Includes C-1 Cable - 5/16" x 25' long with Bulb Auger) |
| 59245 | A-17-A Cable Adapter - Less Cable |
| 59255 | A-17-B Cable Adapter (Includes C-5 Cable - 3/8" x 35' long with Bulb Auger) |
| 59260 | A-17-B Cable Adapter - Less Cable |
| 59265 | A-17-C Cable Adapter (Includes C-6 Cable - 3/8" x 35' long with Male Coupling) |
| 59260 | A-17-C Cable Adapter - Less Cable |
| 92095 | A-17-D Cable Adapter (Includes C-21 Cable - 5/16" x 50' long with Bulb Auger) |
| 92100 | A-17-E Cable Adapter (Includes C-22 Cable - 5/16" x 50' long with Drop Head Auger) |



NOTE: Order parts by Catalog Number only. DO NOT order by Reference Number.

| Ref. No. | Catalog No. | Description |
|----------|-------------|--|
| 1 | 61540 | Screw (3) |
| 2 | 61550 | Screw |
| 3 | 61555 | Retaining Ring |
| 4 | 79935 | Thumb Screw (2) |
| 5 | 61565 | Key |
| 6 | 61735 | Brake Cone (Male) |
| 7 | 59510 | Plunger Pin |
| 8 | 59630 | Brake Cone (Female) |
| 9 | 59760 | Adapter Bracket |
| 10 | 59790 | Adapter Bracket Assembly (Incl. Ref. Nos. 7, 4, 2 and 11) |
| 11 | 60025 | Screw (2) |
| 12 | 60325 | Tube and Flange with Screws (5/16" Cable Adapter) (Incl. Ref. No. 1) |
| 13 | 60335 | Tube and Flange with Screws (3/8" Cable Adapter) (Incl. Ref. No. 1) |
| 14 | 63255 | Cable Container (5/16" x 25' Cable Only) |
| 15 | 63250 | Cable Container (3/8" x 35' and 5/16" x 50' Cable) |

K-50 Motor Wiring 120V 50/60Hz



K-50 Motor Wiring 230V 50Hz

