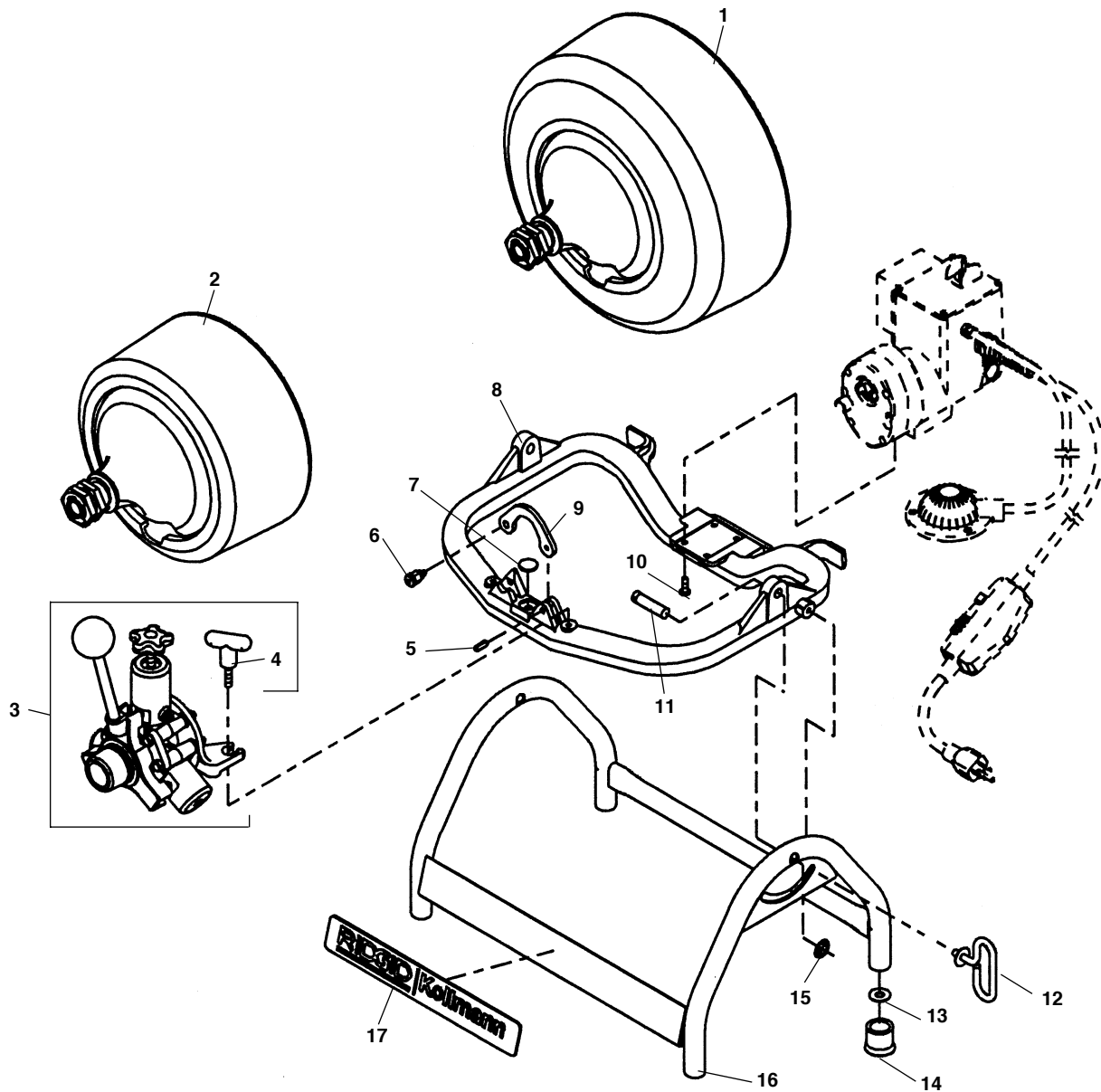


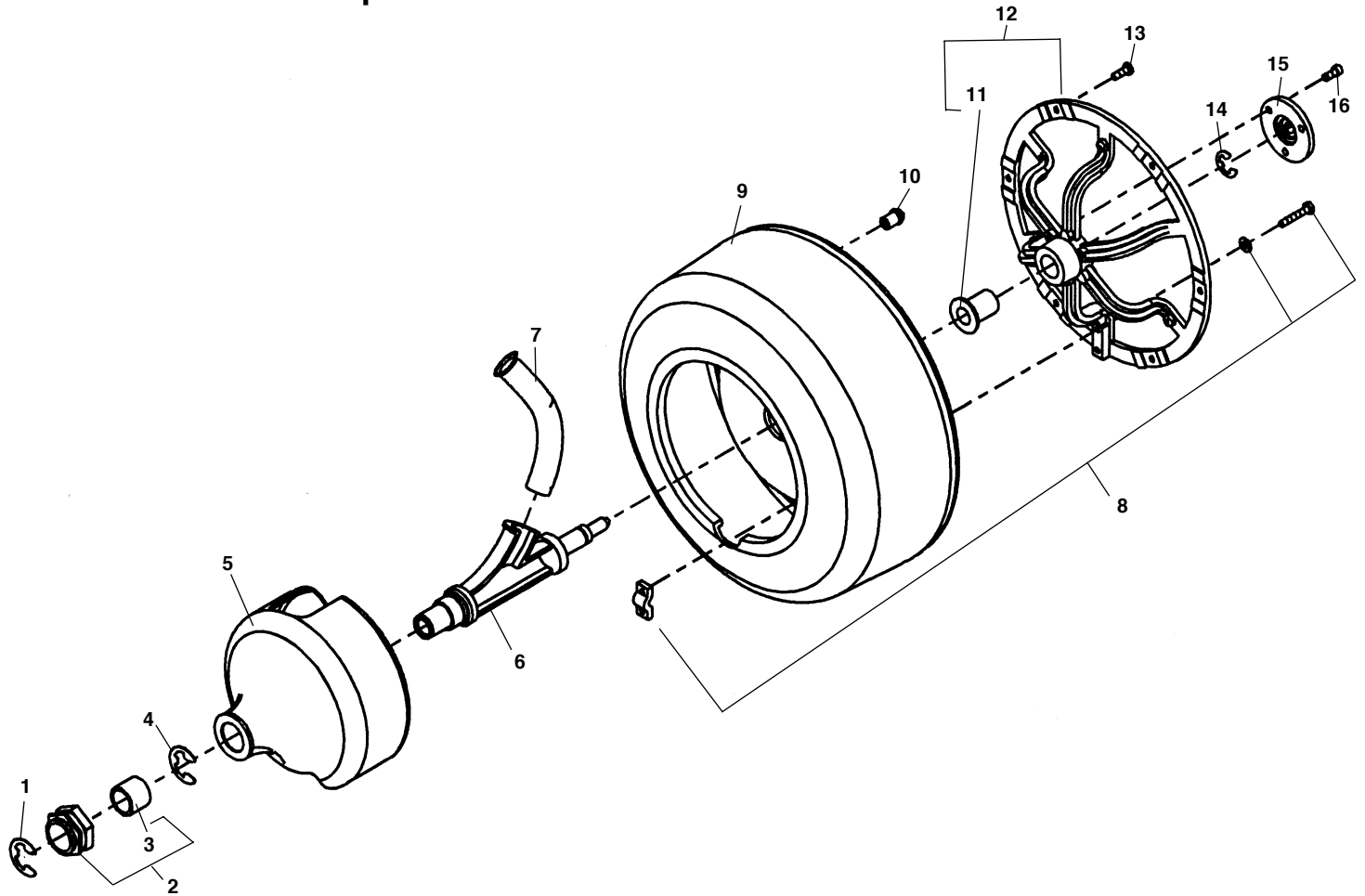
Main Components



**NOTE: Order parts by Catalog Number only.
DO NOT order by Reference Number.**

| Ref. No. | Catalog No. | Description | Ref. No. | Catalog No. | Description |
|----------|-------------|------------------------|----------|-------------|----------------------------|
| 1 | 55002 | Standard Drum Assembly | 10 | 56152 | Screw 1/4" - 20 x 3/4" (4) |
| 2 | 55007 | Sink Drum Assembly | 11 | 56172 | Pivot Pin |
| 3 | 60087 | Autofeed Assembly | 12 | 56192 | Swivel Locking Handle |
| 4 | 60672 | Retaining Knob (2) | 13 | 44230 | Flat Washer 3/8" |
| 5 | 56177 | Roll Pin 1/4" - 3/4" | 14 | 37962 | Rubber End Cap (4) |
| 6 | 59510 | Plunger Pin | 15 | 67427 | Push Nut (2) |
| 7 | 34320 | Wear Plug | 16 | 56197 | Base |
| 8 | 56182 | Yoke | 17 | 56202 | Nameplate |
| 9 | 56187 | Bearing Clamp | | | |

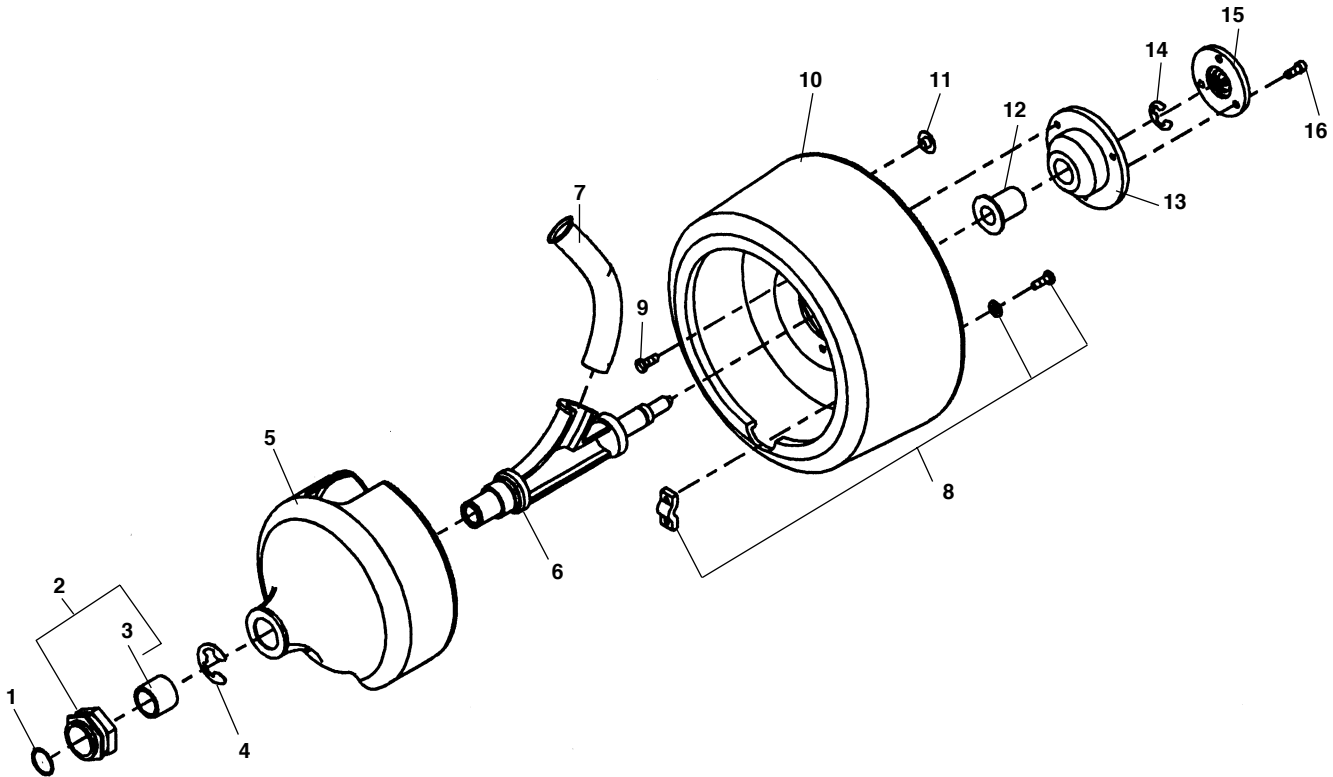
Standard Drum Components



**NOTE: Order parts by Catalog Number only.
DO NOT order by Reference Number.**

| Ref. No. | Catalog No. | Description | Ref. No. | Catalog No. | Description |
|----------|-------------|-------------------------|----------|-------------|----------------------------|
| — | 55002 | Standard Drum Assembly | 9 | 56137 | Drum |
| 1 | 44860 | Retaining Ring | 10 | 56142 | Drain Plug |
| 2 | 56107 | Bearing Block w/Bearing | 11 | 56157 | Flange Bearing |
| 3 | 56112 | Front Bearing | 12 | 56162 | Drum Support w/Bearing |
| 4 | 56117 | Retaining Ring | 13 | 56152 | Screw 1/4" - 20 x 3/4" (6) |
| 5 | 56122 | Inner Drum | 14 | 60050 | Retaining Ring |
| 6 | 56127 | Guide Tube Support | 15 | 56167 | Drive Lug |
| 7 | 56132 | Guide Tube | 16 | 39830 | Screw 1/4" - 20 x 5/8" (3) |
| 8 | 56147 | Cable Clamp Assembly | | | |

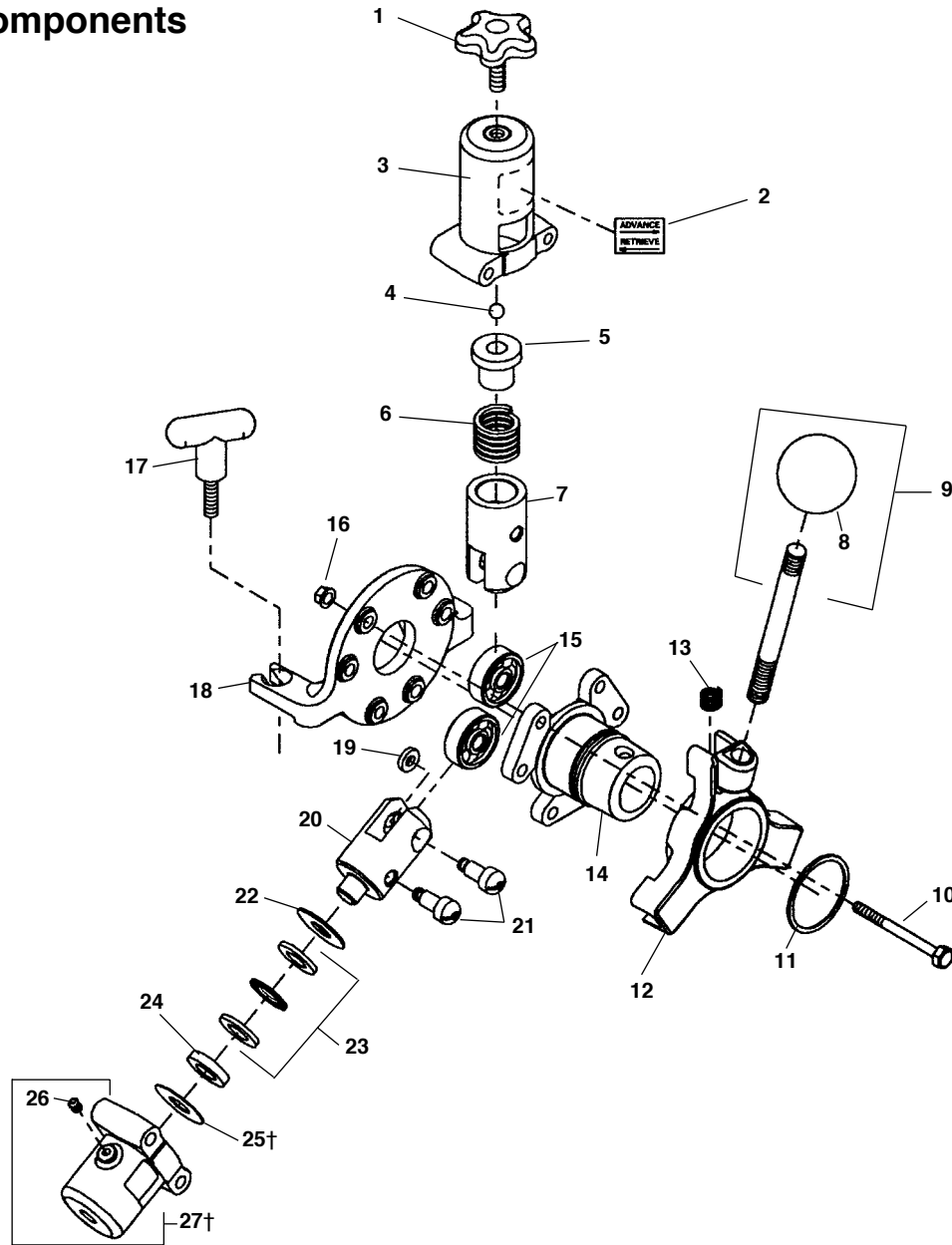
Sink Drum Components



**NOTE: Order parts by Catalog Number only.
DO NOT order by Reference Number.**

| Ref. No. | Catalog No. | Description | Ref. No. | Catalog No. | Description |
|-----------------|--------------------|-------------------------|-----------------|--------------------|----------------------------|
| — | 55007 | Sink Drum Assembly | 9 | 56152 | Screw 1/4" - 20 x 3/8" (3) |
| 1 | 62402 | Retaining Ring | 10 | 61212 | Sink Drum |
| 2 | 56107 | Bearing Block w/Bearing | 11 | 56142 | Drain Plug |
| 3 | 56112 | Front Bearing | 12 | 56157 | Flange Bearing |
| 4 | 56117 | Retaining Ring | 13 | 61217 | Drum Support |
| 5 | 56122 | Inner Drum | 14 | 60050 | Retaining Ring |
| 6 | 56127 | Guide Tube Support | 15 | 56167 | Drive Lug |
| 7 | 56132 | Guide Tube | 16 | 39830 | Screw 1/4" - 20 x 5/8" (3) |
| 8 | 56147 | Cable Clamp Assembly | | | |

Autofeed Components

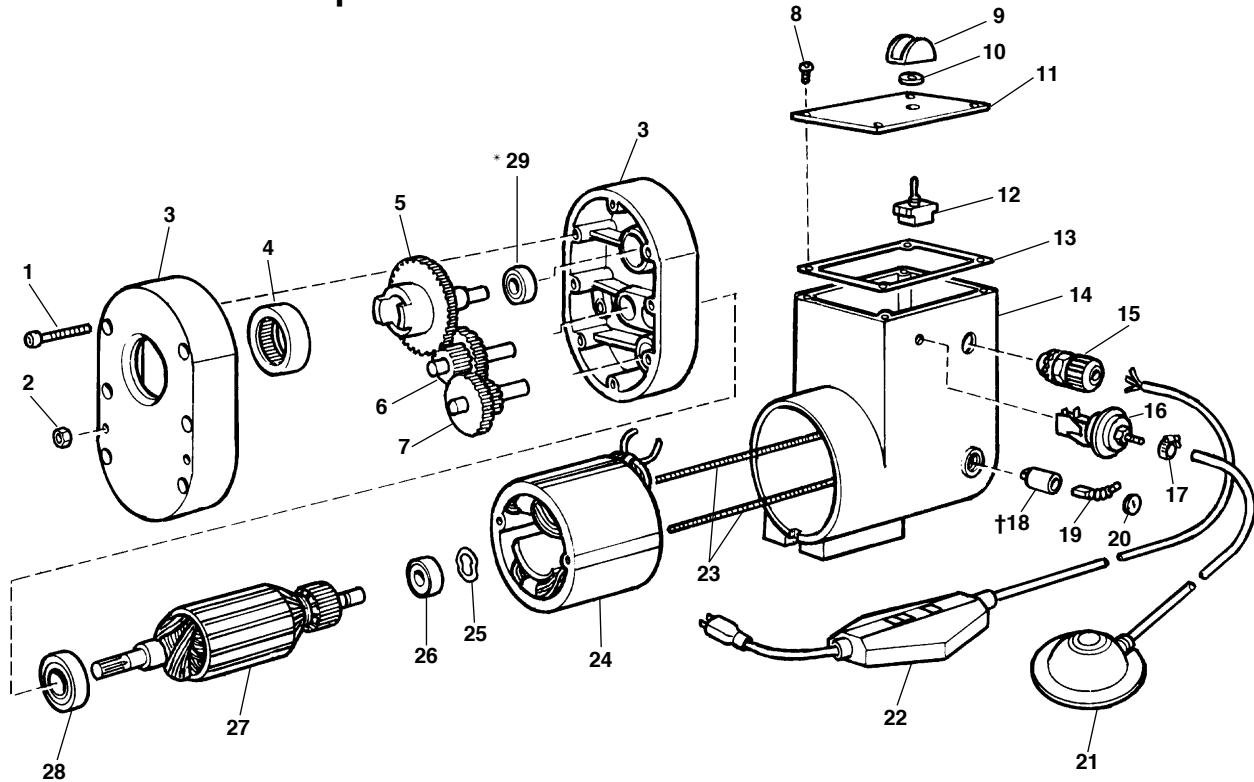


**NOTE: Order parts by Catalog Number only.
DO NOT order by Reference Number.**

| Ref. No. | Catalog No. | Description | Ref. No. | Catalog No. | Description |
|----------|-------------|---|----------|-------------|------------------------------------|
| — | 60087 | Powerfeed Assembly | 14 | 60747 | Front Support Plate |
| 1 | 60682 | Feed Knob | 15 | 60752 | Roller Bearing (3) |
| 2 | 60762 | Advance/Retrieve Label | 16 | 27517 | Lock Nut $\frac{5}{16}$ " - 18 (6) |
| 3 | 60692 | Top Roller Housing | 17 | 60672 | Handle (2) |
| 4 | 60702 | Ball | 18 | 61222 | Back Support Plate |
| 5 | 93475 | Ball Holder | 19 | 60717 | Bearing Spacer (3) |
| 6 | 93375 | Spring | 20 | 60722 | Stationary Roller Housing (2) |
| 7 | 60707 | Movable Roller Holder | 21 | 60732 | Actuator Pin (6) |
| 8 | 59585 | Knob | 22 | 68362 | Spacer 0.12" (2) |
| 9 | 93630 | Clutch Handle Assy. w/Knob | 23 | 68367 | Thrust Bearing Assembly (2) |
| 10 | 60737 | Bolt $\frac{5}{16}$ " - 18 x 3", Hex Head (6) | 24 | 68372 | Spacer 0.235" (2) |
| 11 | 44112 | Retaining Ring | 25† | 68377 | Spacer 0.06" (2) |
| 12 | 60742 | Actuator | 26 | 89810 | Grease Fitting (4) |
| 13 | 60697 | Return Spring | 27† | 60727 | Stationary Roller Housing (2) |

† Service Note: Remove the 0.06" spacers (Ref. No. 25) from the stationary roller holders (Ref. No. 27) to use the autofeed on $\frac{1}{2}$ " cable.

Motor and Gearbox Components



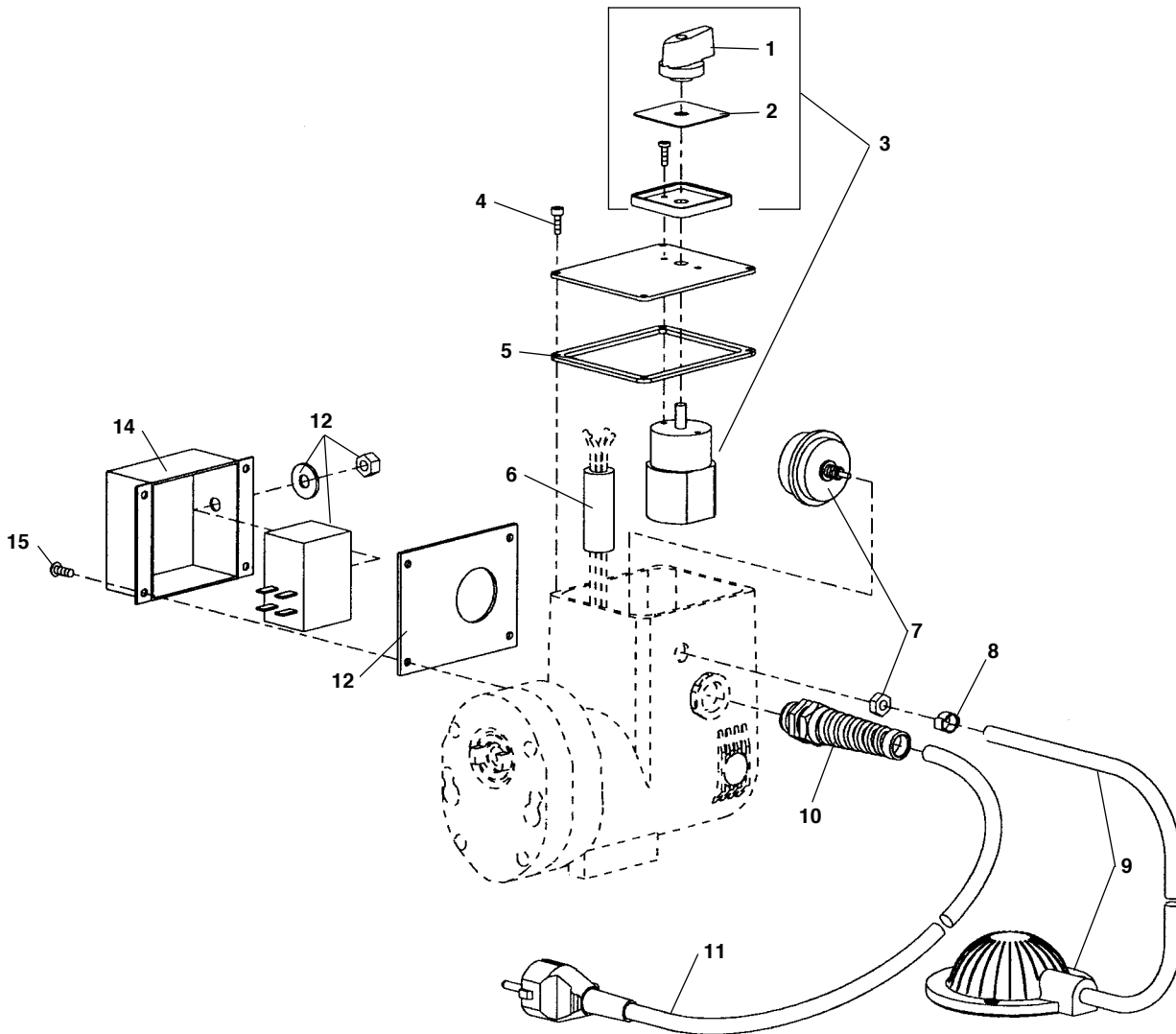
**NOTE: Order parts by Catalog Number only.
DO NOT order by Reference Number.**

| Ref. No. | Catalog No. | Description | Ref. No. | Catalog No. | Description |
|----------|-------------|---------------------------------|----------|---------------------|-------------------------|
| — | 56207 | Motor/Gear Box Assembly 115V | †18 | 56267 | Brush Holder Set |
| — | 62432 | Motor/Gear Box Assembly 230V | — | 56272 | Brush Holder Screw (2) |
| — | 61707 | Motor/Gear Box Assy. 100V Japan | 19 | 56277 | Brush Set |
| 1 | 56212 | 10 - 32 x 1" Screw (6) | 20 | 56282 | Brush Cap Set |
| 2 | 76190 | 8 - 32 Hex Nut (4) | 21 | 37967 | Foot Switch Assembly |
| 3 | 56217 | Gear Box Hsg. w/Bearings | 22 | 50507 | GFI Line Cord 115V |
| 4 | 56222 | Bearing and Seal Set | 15707 | Line Cord 230V | |
| 5 | 56227 | Output Shaft Assembly | 60237 | Line Cord 100V | |
| 6 | 66792 | 2nd Int. Gear | 23 | 56287 | Field Stud (2) |
| 7 | 66787 | 1st Int. Gear | 24 | 56292 | Field Assembly 110/115V |
| 8 | 56242 | 10 - 32 x 1/2" Screw (4) | 60257 | Field Assembly 230V | |
| 9 | 61490 | Switch Guard | 60247 | Field Assembly 100V | |
| 10 | 23512 | Rubber Washer | 25 | 56297 | Wavy Washer |
| 11 | 56247 | Cover | 26 | 56302 | Bearing |
| 12 | 56252 | Toggle Switch | 27 | 56307 | Armature 110/115V |
| 13 | 56257 | Cover Gasket | 60252 | Armature 230V | |
| 14 | 56262 | Motor Housing | 60242 | Armature 100V | |
| 15 | 96265 | Strain Relief | 28 | 56312 | Bearing |
| 16 | 32992 | Air Switch | *29 | 56332 | Thrust Bearing |
| 17 | 35142 | Hose Clamp | | | |

†Service Note: Brush holder screws are located under field studs (Ref. No. 23).

* Ref. 29 Assemble stamped end into housing.

European Electrical Components

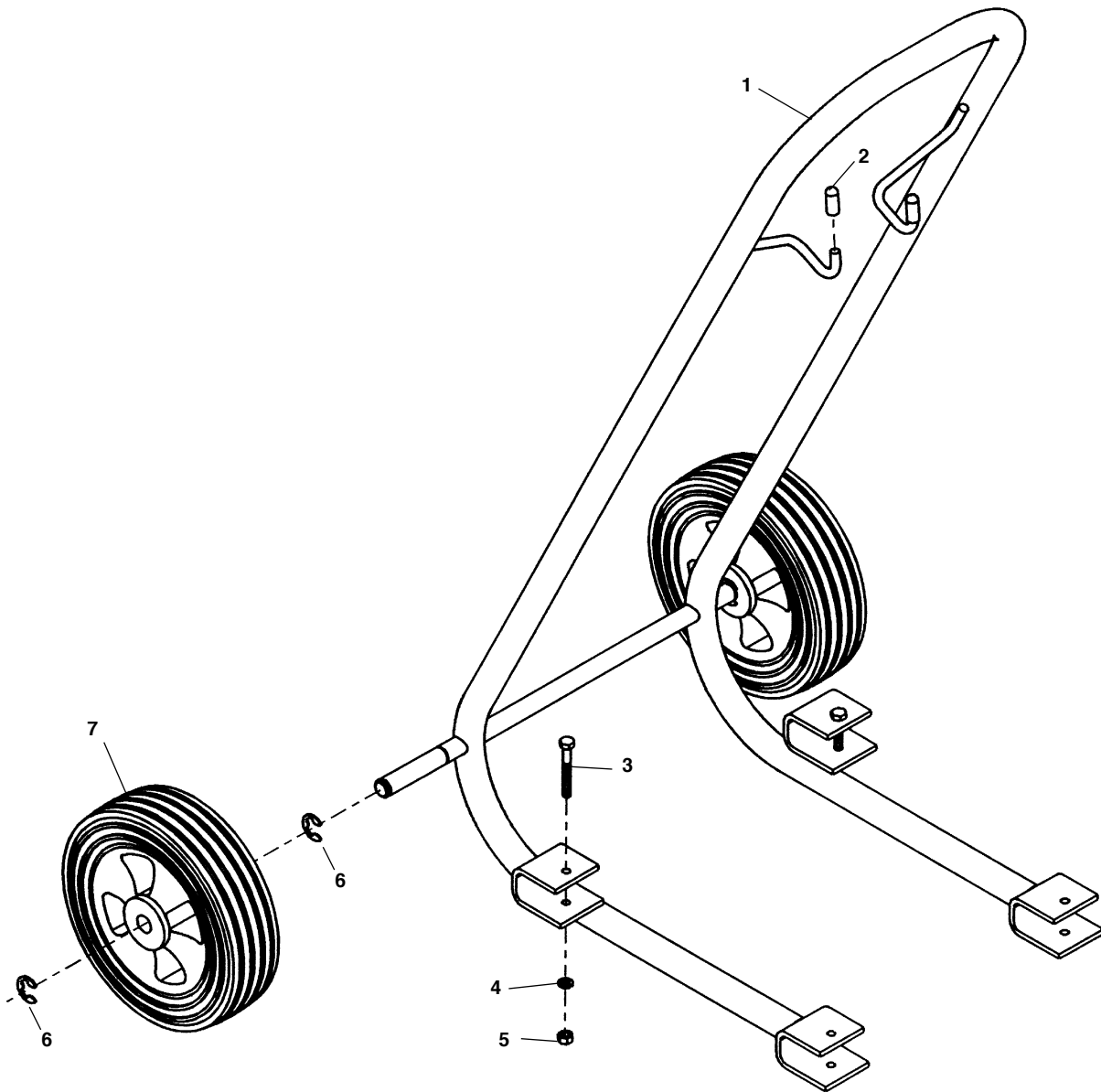


**NOTE: Order parts by Catalog Number only.
DO NOT order by Reference Number.**

| Ref. No. | Catalog No. | Description | Ref. No. | Catalog No. | Description |
|----------|-------------|------------------------------|----------|-------------|---------------------------|
| — | 67892 | 220V Motor Assembly - Europe | 8 | 35142 | Clamp |
| — | 67897 | 110V Motor Assembly - Europe | 9 | 37967 | Foot Switch w/Hose |
| 1 | 61397 | Switch Knob | 10 | 27187 | Strain Relief w/Lock Nut |
| 2 | 57517 | Face Plate | 11 | 39562 | Power Cord - 220V |
| 3 | 54157 | Switch Assembly | | 45022 | Power Cord - 110V |
| 4 | 56242 | Screw 10 - 32 x 1/2" (4) | 12 | 67907 | Gasket |
| 5 | 56257 | Gasket | 13 | 63372 | Suppressor w/Washer & Nut |
| 6 | 63377 | Ferrite Bead | 14 | 67902 | Suppressor Box |
| 7 | 32992 | Air Switch | 15 | 36787 | Screw #10 Self-tapping |

Note: Refer to Motor and Gearbox Components for internal motor parts.

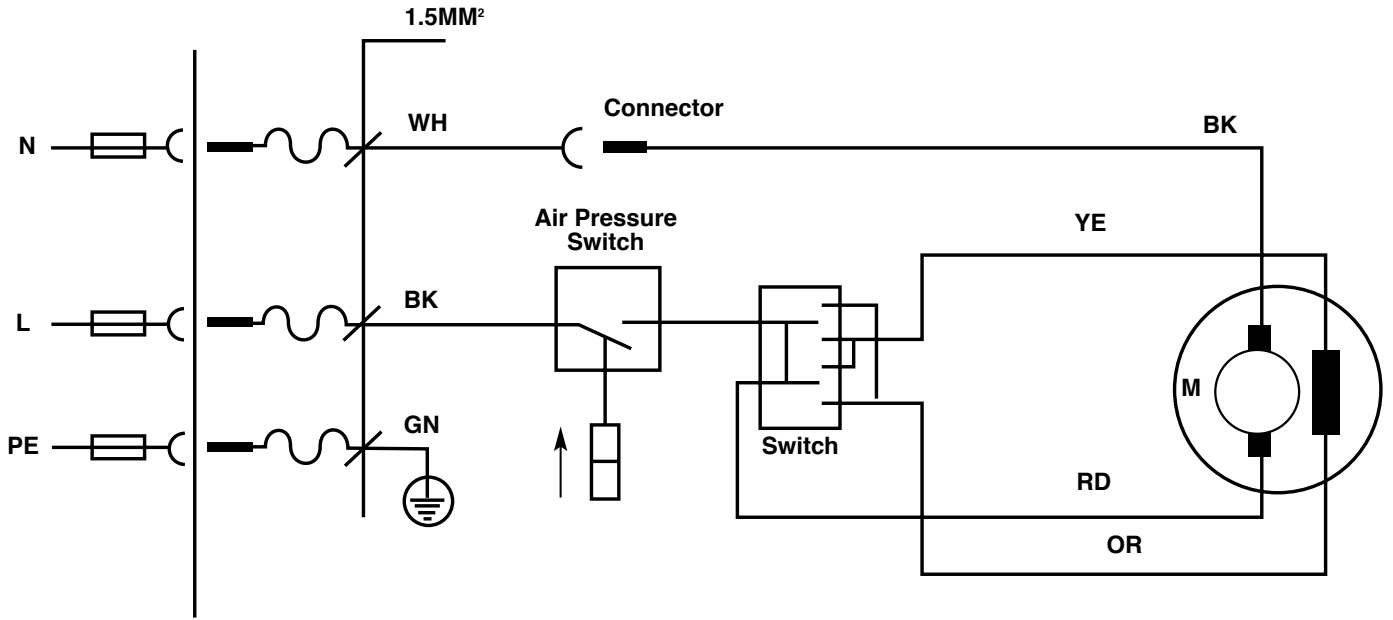
Transport Cart Components



**NOTE: Order parts by Catalog Number only.
DO NOT order by Reference Number.**

| Ref. No. | Catalog No. | Description |
|----------|-------------|-------------------------|
| - | 55017 | Transport Cart |
| 1 | 64872 | Frame |
| 2 | 50202 | Vinyl Cap (2) |
| 3 | 64877 | Bolt 1/4" - 20 x 2" (2) |
| 4 | 60075 | Lock Washer (2) |
| 5 | 77710 | Jam Nut (2) |
| 6 | 62647 | Retaining Ring (4) |
| 7 | 93325 | Wheel (2) |

Wiring Diagram 115V/25-60 Hz



Wiring Diagram 110/220V 50 Hz

