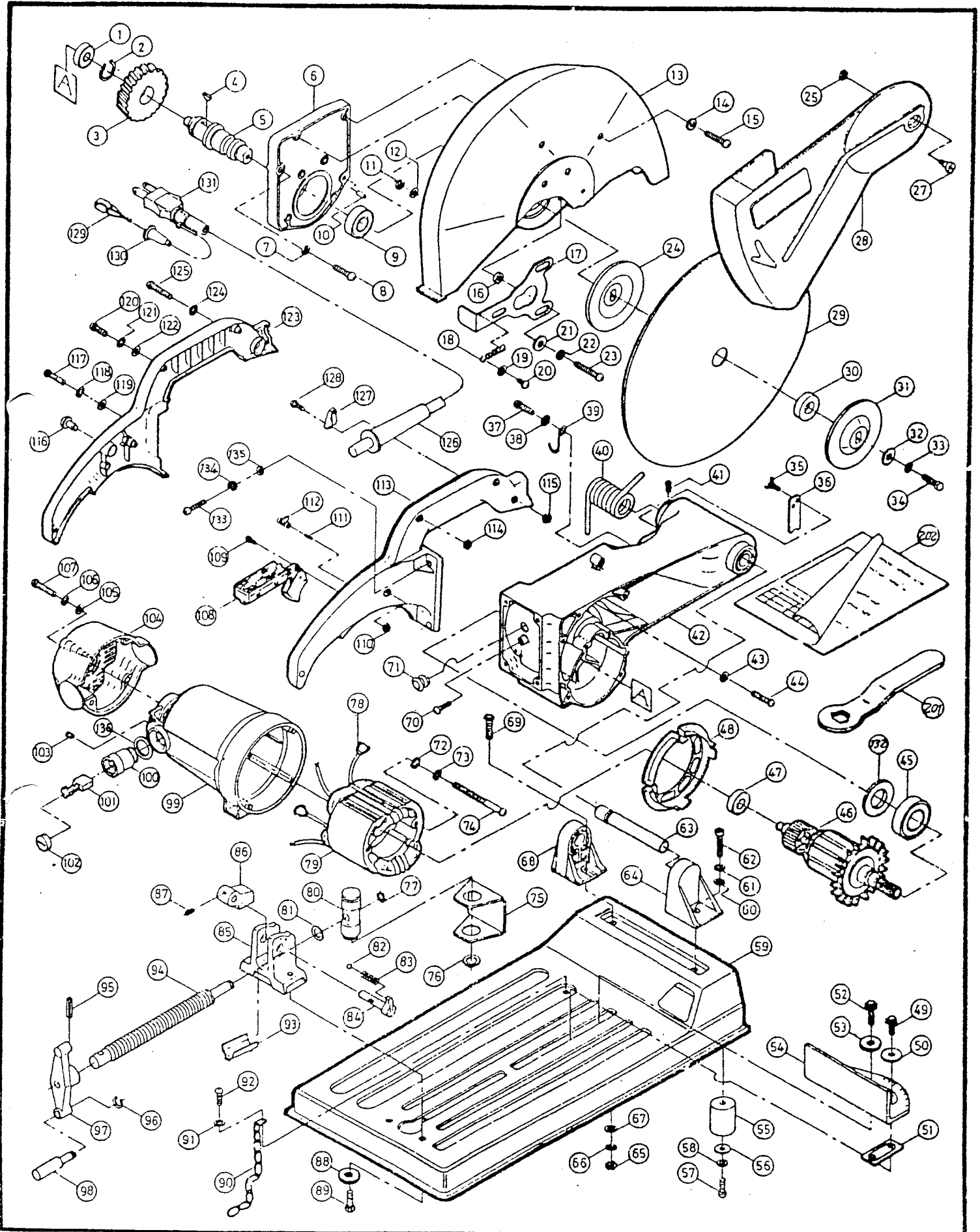


**RIDGID**

**580 PARTS LIST**



REF.	DESCRIPTION	CAT. No
1	BALL BEARING 6000 LB	37406
2	RETAINING RING	48206
3	HELICAL GEAR	48216
4	WOODRUFF KEY	48226
5	SPINDLE	48236
6	BEARING BOX	48246
7	FLAT WASHER	36736
8	PAN HEAD SCREW M5X22	48266
9	BALL BEARING 6205 LLB	48276
10	SET PIN	48286
11	HEX NUT M4	37096
12	FLAT WASHER	37476
13	SAFETY COVER	48316
14	FLAT WASHER	36736
15	PAN HEAD SCREW M5X32	48336
16	SLEEVE	48346
17	SPINDLE LOCKER	48356
18	SPRING	48366
19	FLAT WASHER	37476
20	PAN HEAD SCREW M4X8	39196
21	FLAT WASHER	48376
22	SPRING WASHER	36726
23	PAN HEAD SCREW M5X38	48386
24	FLANGE	48396
25	HEX NUT M8 W/PLAST. INSERT	48406
27	SHOULDER BOLT	48426
28	OUTER COVER	48436
29	ABRASIVE WHEEL	48446
30	SLEEVE	48456
31	FLANGE	48396
32	FLAT WASHER	48476
33	SPRING WASHER	37796
34	HEX HEAD SCREW M8X20	48496
35	THUMB SCREW M5X12	48506
36	STOPPER	48516
37	PAN HEAD SCREW M6X18	48526
38	FLAT WASHER	48536
39	HANGER	37296
40	TORSING SPRING	48556
41	PAN HEAD SCREW M4X14	36766
42	GEAR HOUSING	48566
43	FLAT WASHER	36736
44	PAN HEAD SCREW M5X30	48576
45	BALL BEARING 6203 LLB	48586
46	ARMATURE ASSM. 110 VOLT	48596
46	ARMATURE ASSM. 230 VOLT	48606
47	BALL BEARING 6200 LLB	36856
48	FAN GUIDE	48616
49	HEX HEAD SCREW M8X20	48496
50	FLAT WASHER	48666
51	WISE STOP PLATE	48646
52	HEX HEAD SCREW M8X20	48496
53	FLAT WASHER	48666
54	FENCE GUIDE	48676
55	RUBBER BOOT	48686
56	FLAT WASHER	38116
57	PAN HEAD SCREW M6X25	37276
58	SPRING WASHER	37286
59	BASE	48716
60	FLAT WASHER	37756
61	SPRING WASHER	37796
62	PAN HEAD SCREW M8X28	48746
63	HINGE CORE	48756
64	PIVOT BLOCK (RIGHT)	48766
65	HEX NUT M8	37916
66	SPRING WASHER	37796
67	FLAT WASHER	37756
68	PIVOT BLOCK (LEFT)	48806
69	HEX HEAD SCREW M8X25	37906
70	PAN HEAD SCREW M4X10	36846

REF.	DESCRIPTION	CAT. No
71	WIRE GUARD	36866
72	INNER TOOTH WASHER	36916
73	SPRING WASHER	36726
74	PAN HEAD SCREW M5X72	36936
75	WISE PLATE	48856
76	RETAINING RING C22	48866
77	RETAINING RING C11	48876
78	BRUSH HOLDER SPRING	36896
79	FIELD ASSM. 110 VOLT	48886
79	FIELD ASSM. 230 VOLT	48896
80	FIXING BOLT	48906
81	FLAT WASHER	48916
82	STEEL BALL	48926
83	SPRING WASHER	48936
84	CHANGE LEVER	48946
85	WISE MOUNT	48956
86	WISE LOCK BLOCK	48966
87	HEX SOCKET NO HD SCREW M4	48976
88	FLAT WASHER	48666
89	HEX HEAD SCREW M8X20	48496
90	CHAIN	50466
91	FLAT WASHER	48536
92	PAN HEAD SCREW M6X18	48526
93	SADDLE	50496
94	WISE SCREW	50506
95	SPRING PIN	50516
96	RETAINING RING C10	50526
97	WISE HANDLE	50536
98	ROCKING HANDLE	50546
99	MOTOR HOUSING	50556
100	CARBON BRUSH HOLDER	36826
101	CARBON BRUSH	36816
102	BRUSH HOLDER CAP	36836
103	HEX SOCKET NO HD SCREW M4	48976
104	REAR COVER	50576
105	FLAT WASHER	37196
106	SPRING WASHER	36726
107	PAN HEAD SCREW M5X25	50596
108	SWITCH	50606
109	TAPPING SCREW	37156
110	HEX NUT M4	37096
111	SPRING	37136
112	STOPPER	37146
113	HANDLE (RIGHT)	37106
114	HEX NUT M4	37096
115	HEX NUT M5	37086
116	PUSH POLE	37316
117	PAN HEAD SCREW M4X28	37266
118	SPRING WASHER	37226
119	FLAT WASHER	37236
120	PAN HEAD SCREW M4X18	37216
121	SPRING WASHER	37226
122	FLAT WASHER	37236
123	HANDLE (LEFT)	37186
124	FLAT WASHER	37196
125	PAN HEAD SCREW M5X26	50636
126	CORD GUARD 110 VOLT	37066
126	CORD GUARD 230 VOLT	50656
127	STRAIN RELIEF	37166
128	TAPPING SCREW	37176
131	POWER CORD W/PLUG 110	50706
131	POWER CORD W/PLUG (VDE)	50716
132	FLAT WASHER	50726
133	PAN HEAD SCREW M6X25	37276
134	SPRING WASHER	37286
135	FLAT WASHER	50756
136	INSULATING WASHER	39066
201	SPANNER	50766
	WISE ASSEMBLY	48846