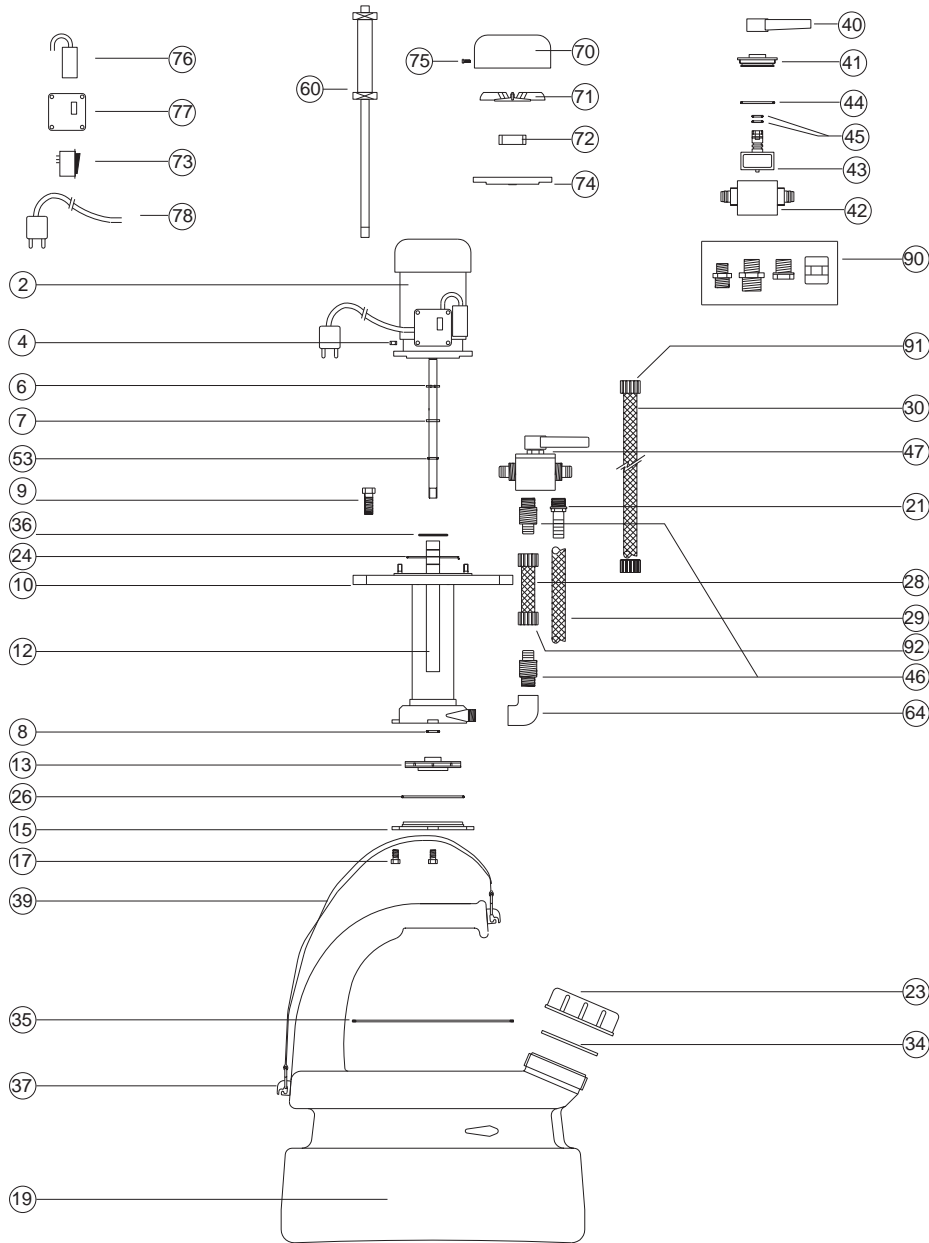




# DP-13 Descaling Pump



No.	Description	Cat. No.	No.	Description	Cat. No.
2	Singlephase motor 220V, 0.15Hp	57546	37	Belt holder	61776
4	Brass nut, 6mm	57556	39	Complete belt	57616
6	O-ring seal D12	57566	40	Reverser valve handle	74416
7	Arnite washer	57576	41	Valve reverser cover	74426
8	O-ring impellor	74346	42	Body reverser valve	74436
9	Bolt 12mm in PPI	57586	43	Fly valve reverser	74446
10	Flange + pump body in PP	57596	44	O-ring for reverser cover	74456
12	Shaft sleeve in PP	57606	46	Hose fitting 1/2 x 3/4 x 16	57736
13	Impellor in PP	57626	47	Flow reverser	57696
15	Rotor cover in PP	57636	53	O-ring x butterfly inverter	87146
17	Bolt 8mm in PPI	57646	60	Rotor + bearing	87156
19	DP-13 red tank	57656	64	90° Elbow fitting 1/2"	57746
21	Hose fitting 1/2" x 16mm in PVC	57706	72	Roller bearing	74476
23	Tank cap	57756	73	Switch	74486
24	O-ring x motor flange	74366	74	Black flange 0.15 Hp + p oil	72006
26	O-ring 10-15	74376	76	Capacitor 6.3mF( 0.17 IC)	74496
28	Output in PVC	57716	77	Terminal cov. Box / Capac. Holder	74506
29	Returnhose in PVC	57726	78	3 Poles cable + schuko plug	74966
30	Transparent hose in PVC	57686	90	Thread kit of adapers	57666
34	Washer epdm d.91x77,5x4	74396	91	Hose fitting 1/2"	57676
35	Tank washer	74406	92	Shaft gripping ring nut 3/4	74386
36	Motor flange washer	74356		Motor fan + cover	61756
				Set of seals	61766